



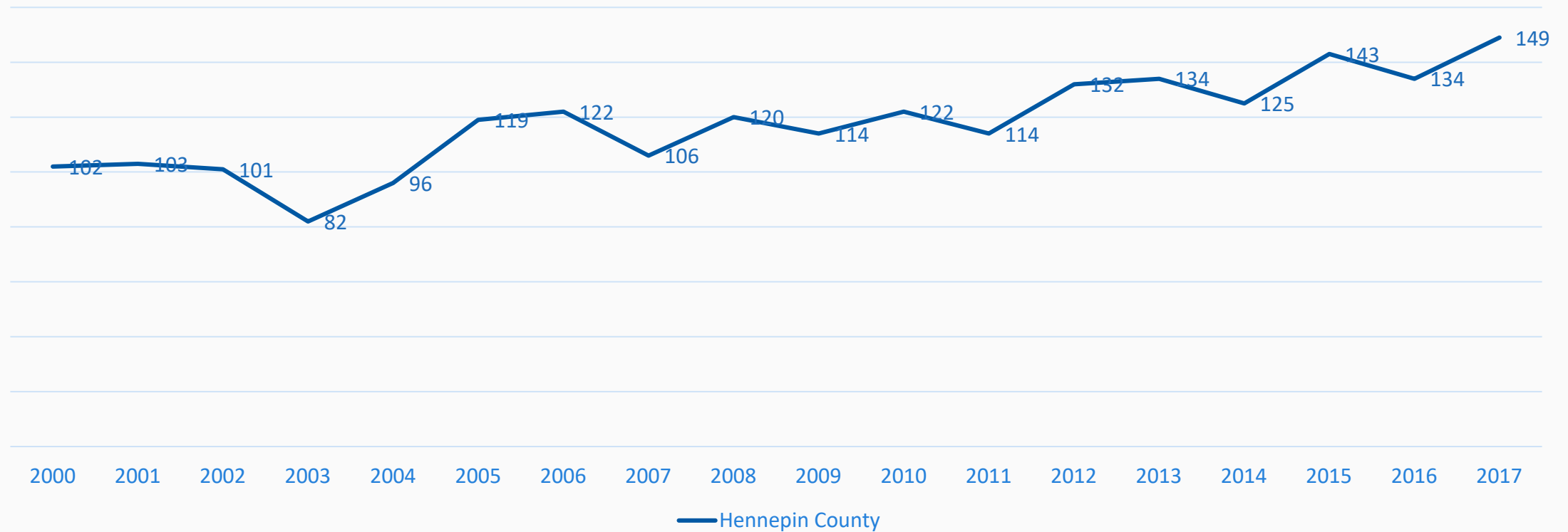
HENNEPIN COUNTY
MINNESOTA

Zero Suicide in Hennepin County

Creating a Pathway to Safer Patient Care

Hennepin County Public Health: Heather Kolnick and Amy Leite Bennett

Suicide deaths increasing in Hennepin County

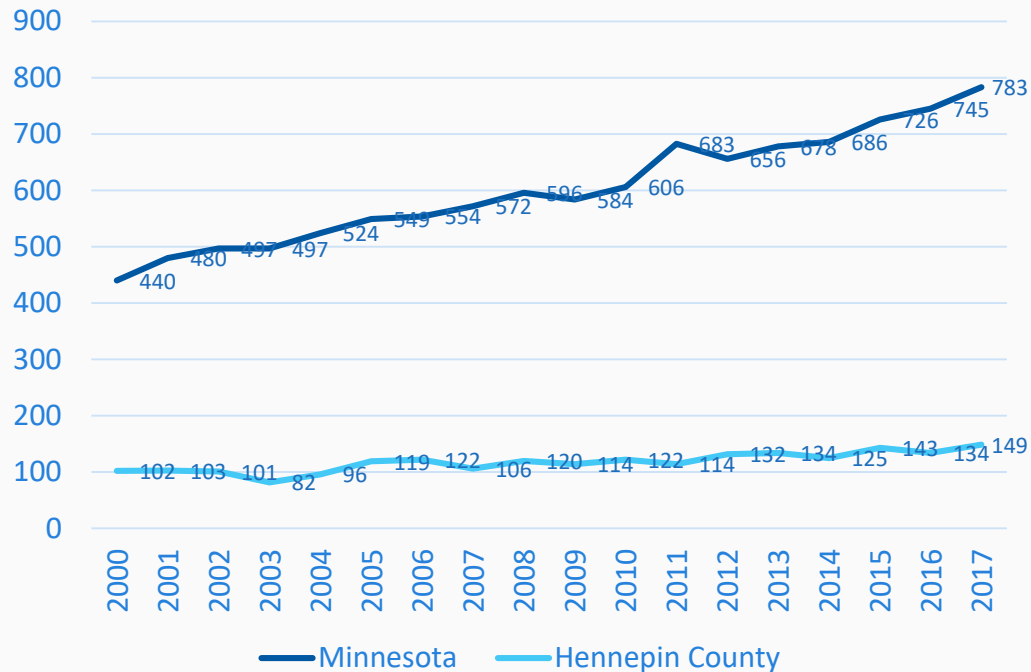


Source: 2000 – 2017 vital stats; Minnesota Dept of Health, geocoded and analyzed by Hennepin County Public Health

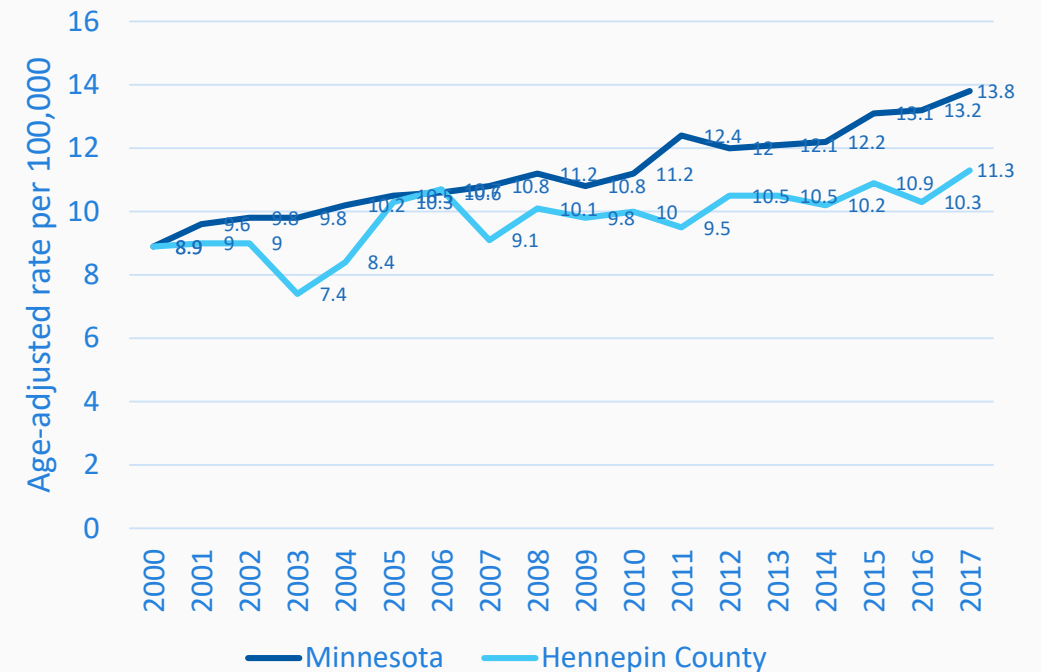


Increases in Hennepin County lower vs. MN

Count of suicide deaths



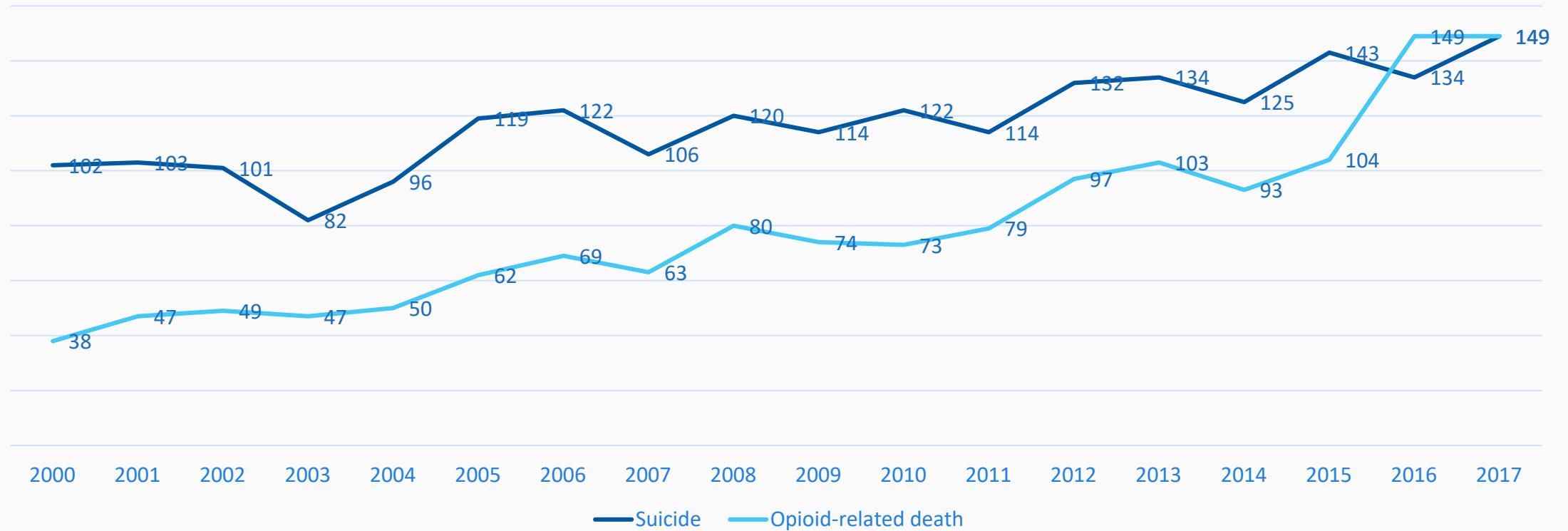
Age-adjusted suicide rates



Source: 2000 – 2017 vital stats; Minnesota Dept of Health, geocoded and analyzed by Hennepin County Public Health



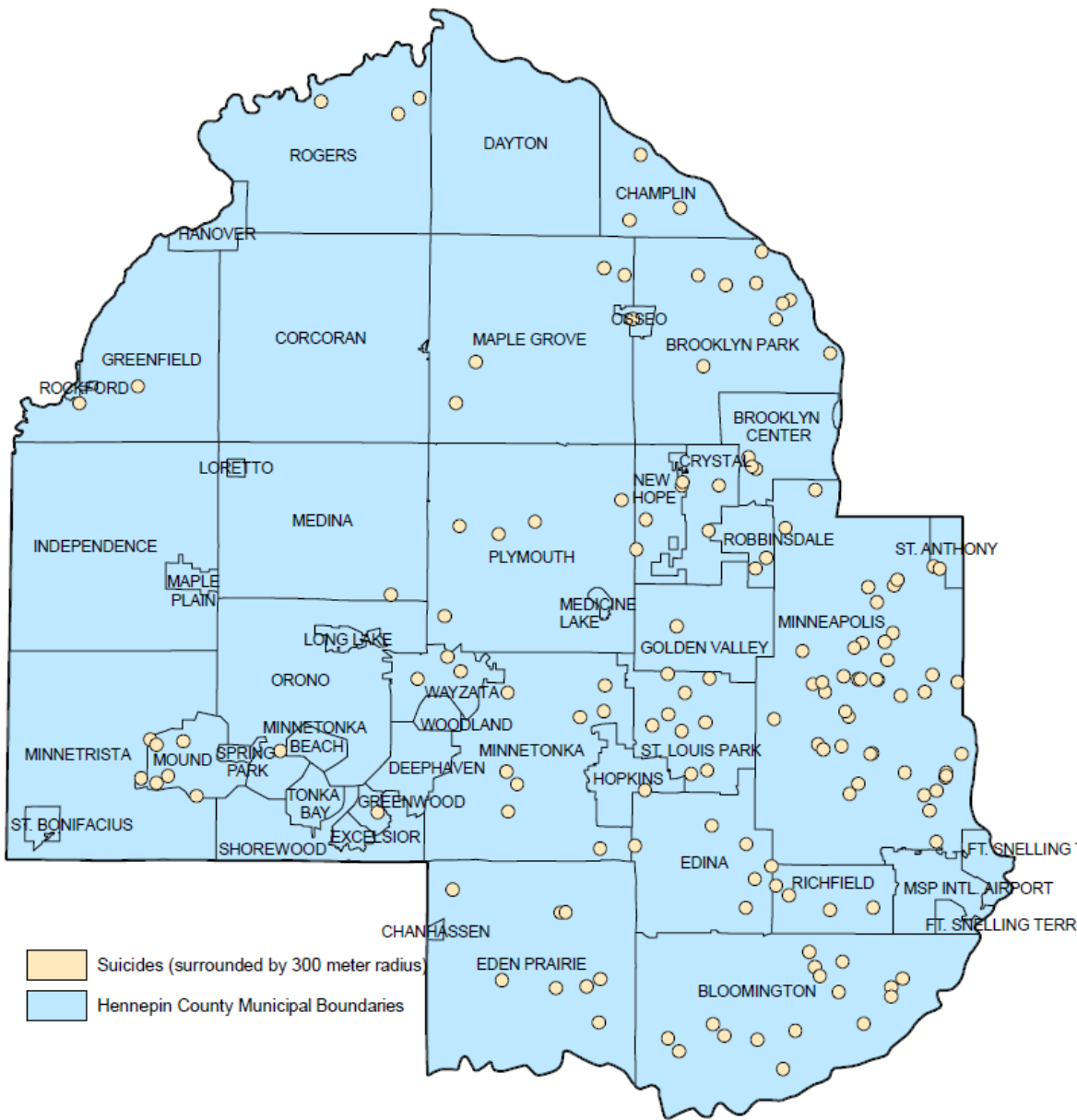
Counts of suicide and opioid-related deaths similar



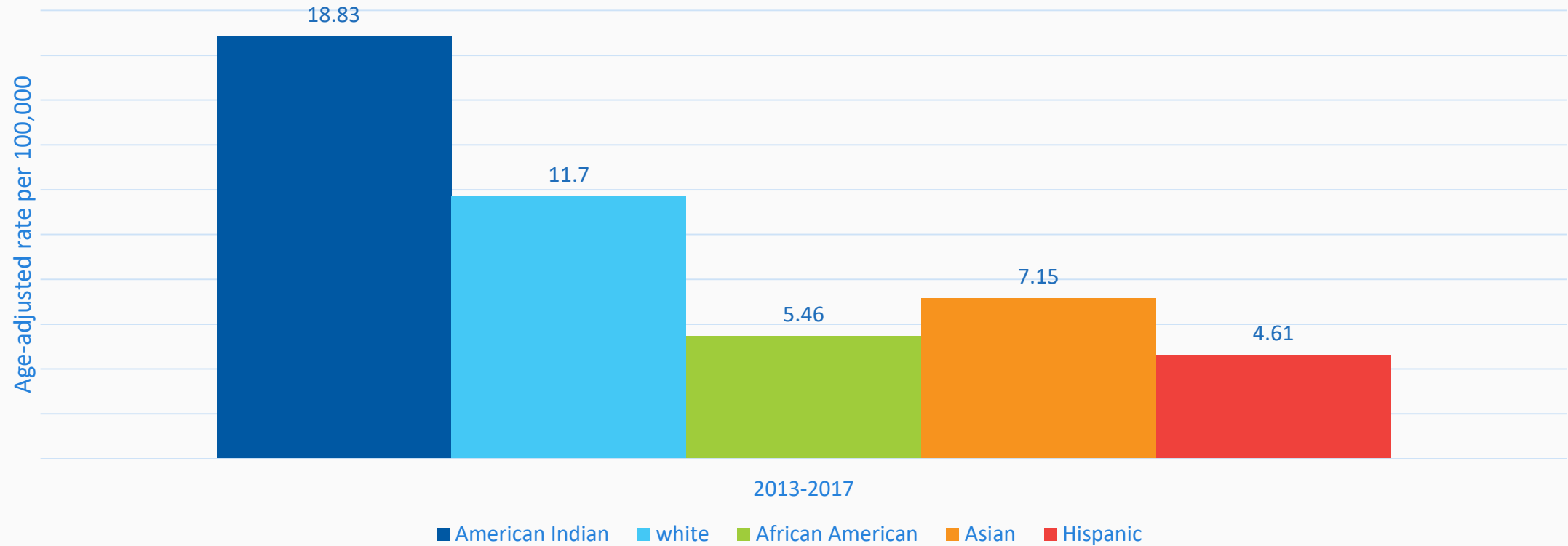
Source: 2000 – 2017 vital stats; Minnesota Dept of Health, geocoded and analyzed by Hennepin County Public Health



Suicide affects families throughout Hennepin County



Suicide deaths in Hennepin County: by race



Source: 2017 vital stats; Minnesota Dept of Health, geocoded and analyzed by Hennepin County Public Health



Hennepin County Public Health: Mental health

- Emergency mental health
 - Phone and mobile crisis – 24/7
 - COPE – adults 18 and older
 - Child Crisis – children 17 and younger
- Co-responder program with Minneapolis Police Department
 - Review 911 calls from day prior to assess for EBD
 - Triage incoming 911 calls and may dispatch with officers to scene

Hennepin County Public Health: Mental health

- Prepetition screening mandated to:
 - Facilitate the commitment process by working with the patient, treatment community, county attorney's office, and family members
 - Assess whether the patient's situation meets the criteria for commitment
 - Divert patients from the commitment process by assisting in the development of a less-restrictive alternative

Hennepin County Public Health: Mental health

- Mental Health Center
 - Serves adults who have serious mental illness and who may also have a co-occurring substance use disorder.
 - Serve children and adolescents who have severe emotional disturbance, have been abused or neglected, or have been court-ordered for evaluation.
 - Licensed as a DHS Rule 29 Community Mental Health Center.
- Services include diagnostic assessments, psychiatric and psychological evaluations, combined psychological and parenting evaluations; therapy and education; medication services including onsite pharmacist; and whole-person care

Zero Suicide (from <https://zerosuicide.sprc.org/about>)

ZEROSuicide
IN HEALTH AND BEHAVIORAL HEALTH CARE

Contact Us Login Suicide Prevention Lifeline 1-800-273-TALK (8255)
» Suicide Prevention Resource Center » Zero Suicide Institute

HOME ABOUT TOOLKIT CHAMPIONS RESOURCES Search

ZERO SUICIDE

The foundational belief of Zero Suicide is that suicide deaths for individuals under the care of health and behavioral health systems are preventable. For systems dedicated to improving patient safety, Zero Suicide presents an aspirational challenge and practical framework for system-wide transformation toward safer suicide care.

LEARN MORE »

Lead
Train
Identify
Engage
Treat
Transition
Improve

Hennepin

The screenshot shows the Zero Suicide website homepage. At the top, there is a dark header with the Zero Suicide logo and navigation links. Below that is a blue navigation bar with menu items and a search box. The main content area features a large heading 'ZERO SUICIDE' followed by a paragraph explaining the organization's mission. To the right of the text is a graphic with seven colored squares, each containing a word: Lead (red), Train (teal), Identify (green), Engage (purple), Treat (teal), Transition (light green), and Improve (pink). Each word is accompanied by a small photograph of people. At the bottom right of the page is the Hennepin County logo.

Zero Suicide (from <https://zerosuicide.sprc.org/about>)

- Essential elements of suicide care for health and behavioral health systems to adopt:
 - Lead system-wide culture change committed to reducing suicides
 - Train a competent, confident and caring workforce
 - **Identify individuals at-risk of suicide risk via comp screening/assessment**
 - Engage all individuals at-risk of suicide using a suicide care mgmt. plan
 - Treat suicidal thoughts and behaviors using EB treatments
 - Transition individuals through care with warm hand-offs and supportive contacts
 - **Improve policies and procedures through continuous QI**

What is Link Plus?

- A probabilistic record linkage (PRL) program developed at the CDC
- It's free and easy to use!

Link Plus

2. Type of linkage files (e.g., .csv – comma delimited)

5. Phonetic algorithm

1. Locations of linkage files

3. ID variables

4. Partitioning and matching variables

Britney Spears = BRATNY SPAR
George Clooney = GARG CLANY
Ellen DeGeneres = ELAN DAGANAR

43,332

Unduplicated patients served by Hennepin County EMH, MHC, and PSP

5,300

Death records (statewide)

160

Records linked without Link Plus/PRL

238

Records linked with Link Plus/PRL **(+50%)**

Join patients
back to EMR

Death proximity to care	2013	2014	2015	2016	2017
SAME DAY	2		1	1	
1-3 DAYS				1	1
4-7 DAYS		1	2		1
8-14 DAYS	2	1	1	2	2
15-30 DAYS	3			1	2
1-2 MONTHS	2	1			1
2-4 MONTHS	3	4	6	3	4
4-6 MONTHS			5	1	1
6-12 MONTHS	6	5	1	3	7
1-2 YEARS	5	3	6		3

Next Steps

- Compare our patients to Hennepin County and greater MN
- Fatality Review/Psychological Autopsy
 - Patient biographical, personal, and secondary information
 - What services were accessed
- Data collection tools
- Identifying at-risk patients

Questions

Heather Kolnick

Heather.Kolnick@hennepin.us, 612-348-5704

Amy Leite Bennett

Amy.Leite-Bennett@hennepin.us, 612-348-7416

Kay S. Pitkin PhD LP

Kay.Pitkin@hennepin.us, 612-348-3963

