



Securing the Branch Through Digital Transformation

Stephen Watkins MS | CISSP

Director & Principal Security Architect

Why Are We Here?



72% Security is Top
WAN Concern



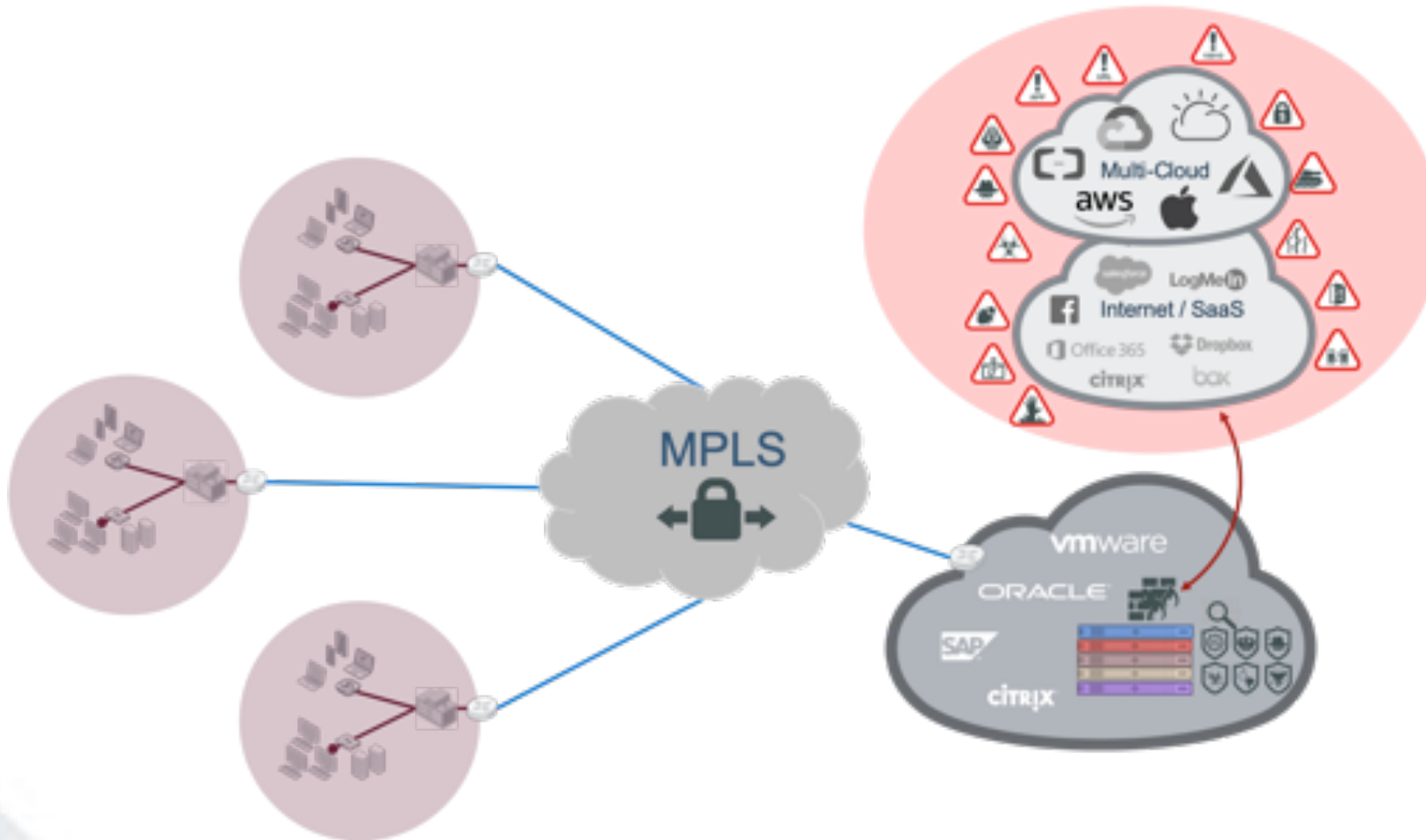
52% Incidents Due to
Human Error



The Internet is Not a
Safe Harbor

Gartner Survey Analysis: Address Security and Digital Concerns to Maintain Rapid SD-WAN Growth, Naresh Singh, 12 November 2018
<https://www.securitymagazine.com/articles/90782-human-error-caused-52-percent-of-cybersecurity-incidents-in-the-industrial-sector-in-2018>

The Starting Point: Legacy WAN Architecture



- No Direct Internet Access (DIA)
- MPLS Private WAN
- Centralized Security Stack
- Internet Backhaul
- Rely on Endpoint Protection @ the Branch

What is Digital Transformation at the WAN Edge?



Improved User Experience

Less Backhaul
More DIA



Cost Reduction

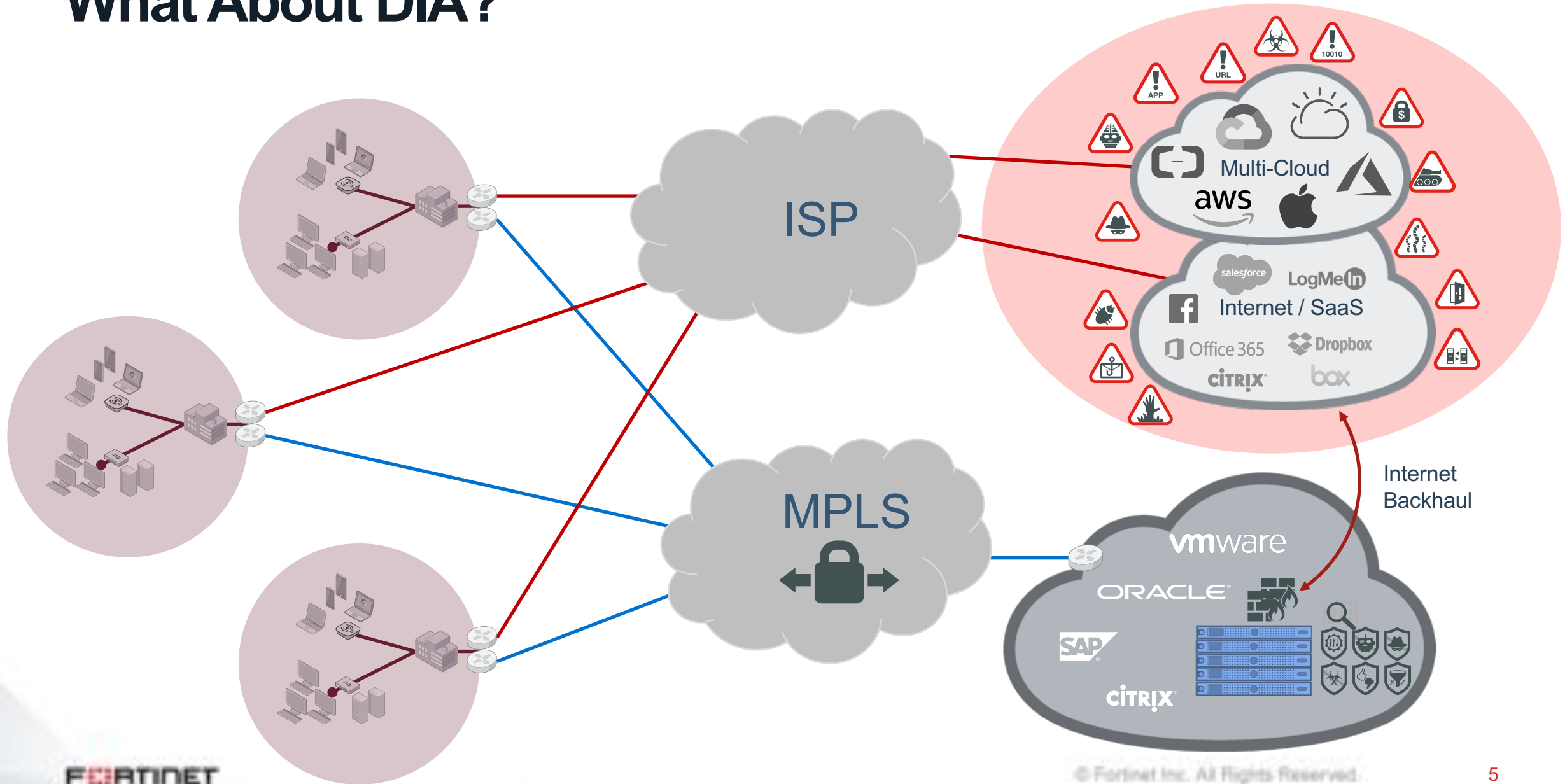
Circuit OpEx
Solution Consolidation
Vendor Footprint



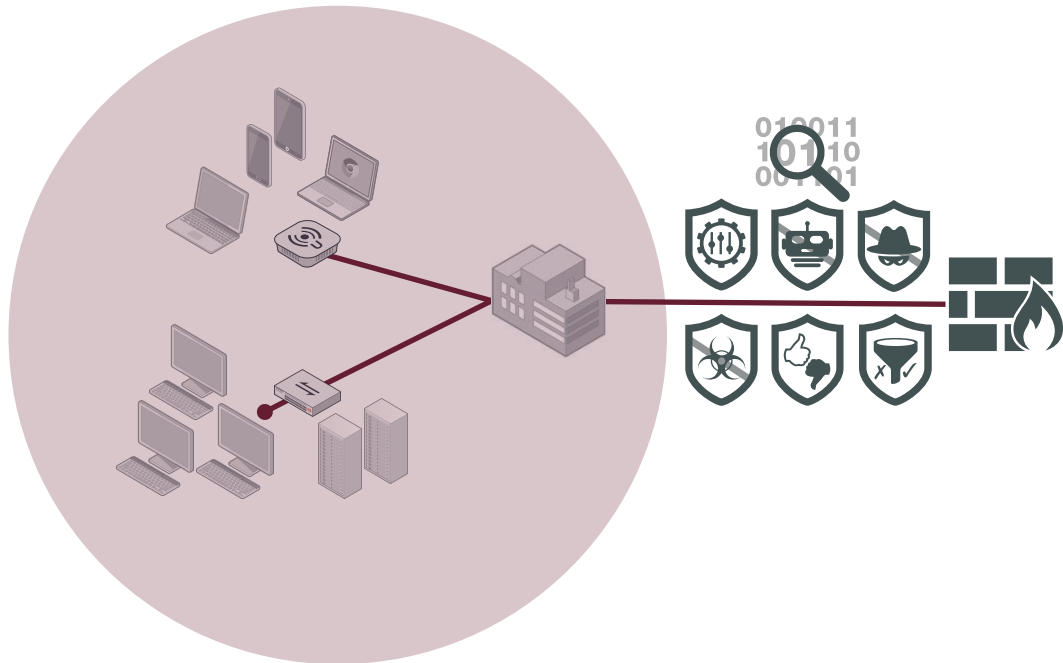
Operational Simplicity

Reduce Edge Complexity
Increase Solution Integration
Augment Staff Shortages

What About DIA?



De-Centralizing The Security Stack

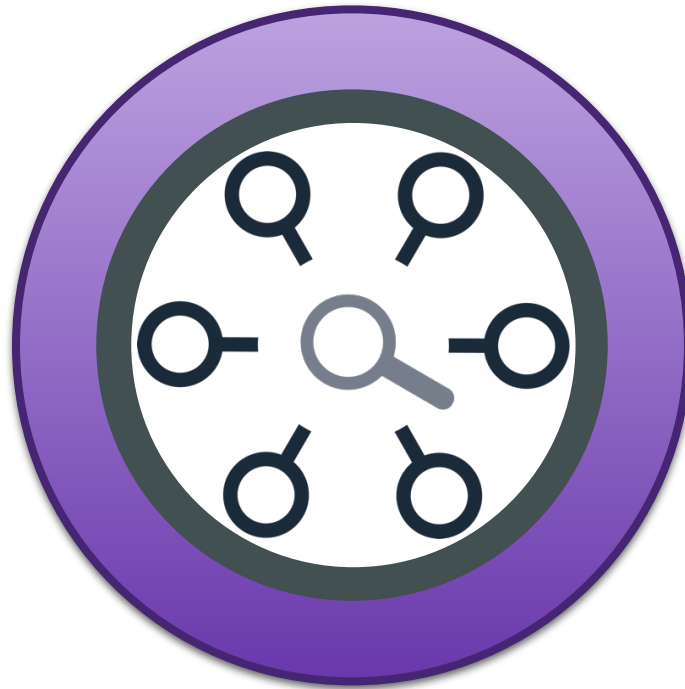


- Replicate Security Stack Functionality
- Consolidate Solutions
- Zero Touch Deployment
- Consistent Security Policy

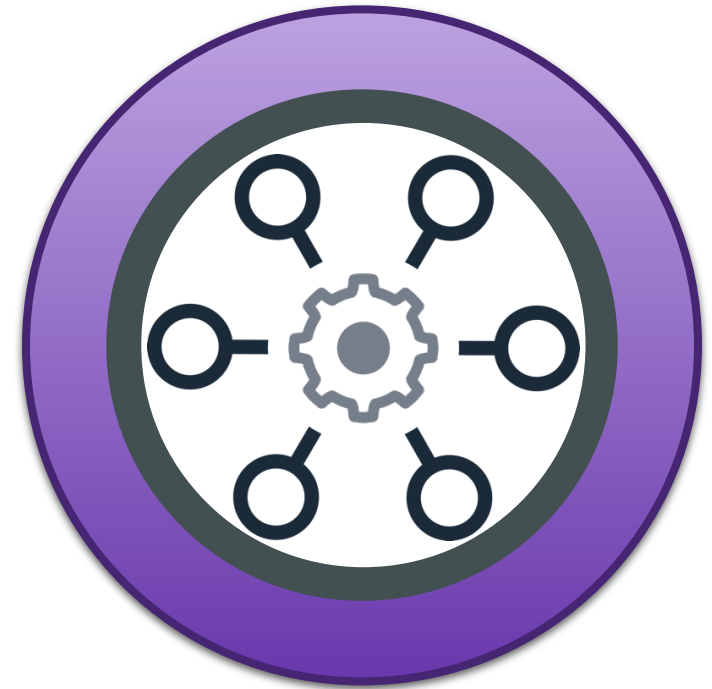
What Are We Doing Here?



VISIBILITY

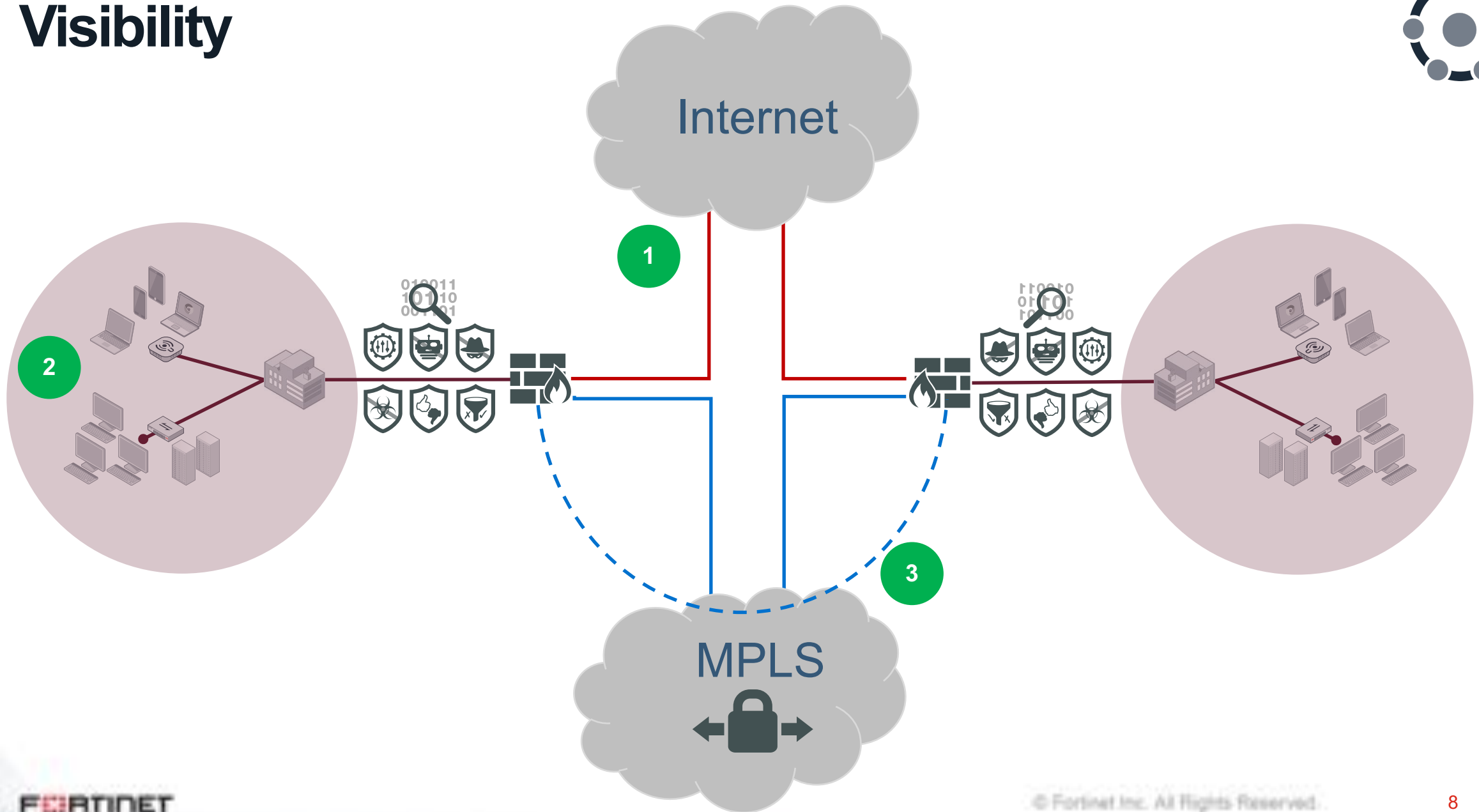


INTEGRATION

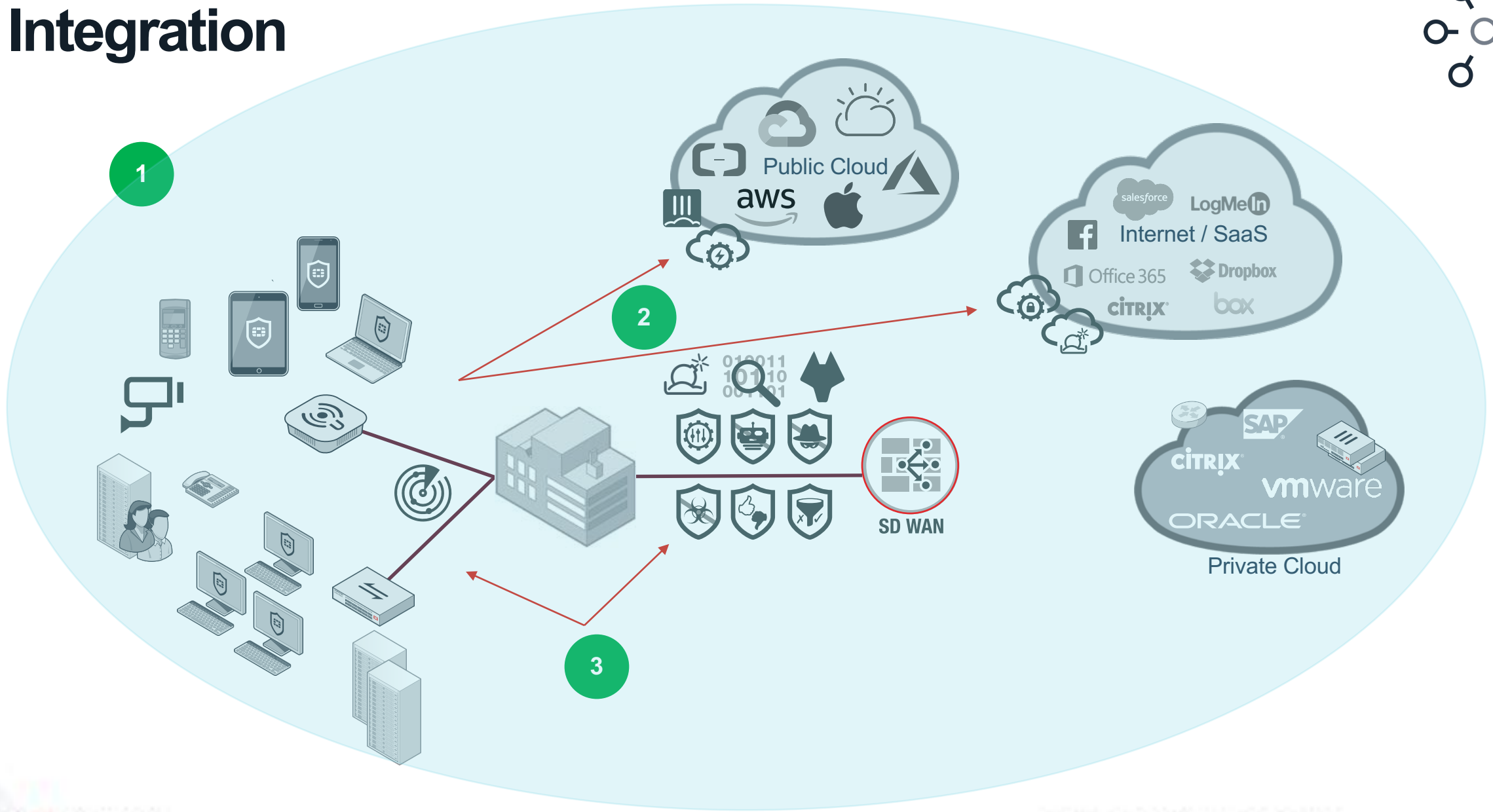


AUTOMATION

Visibility



Integration



Automation



OPERATIONS

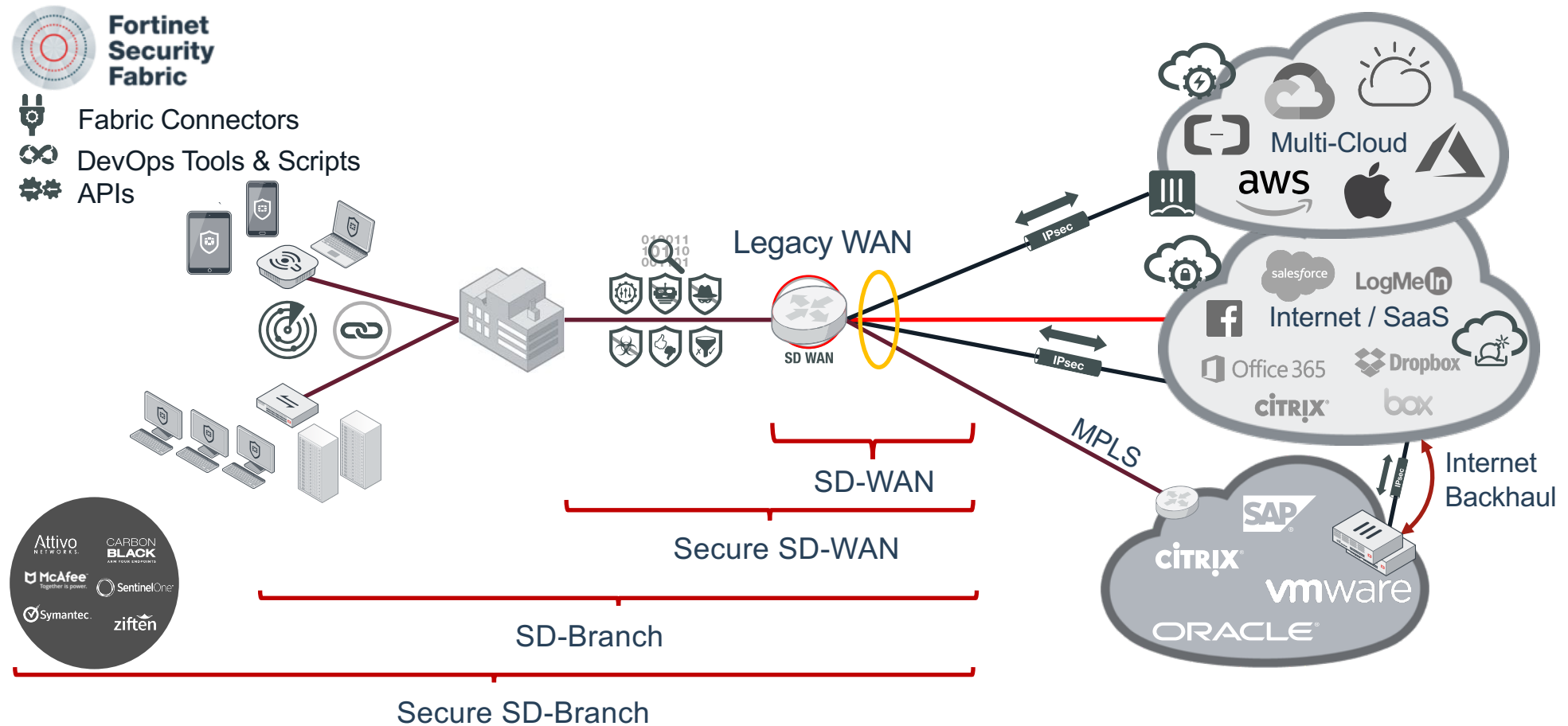


ORCHESTRATION



RESPONSE

Summary: WAN Edge Transformation

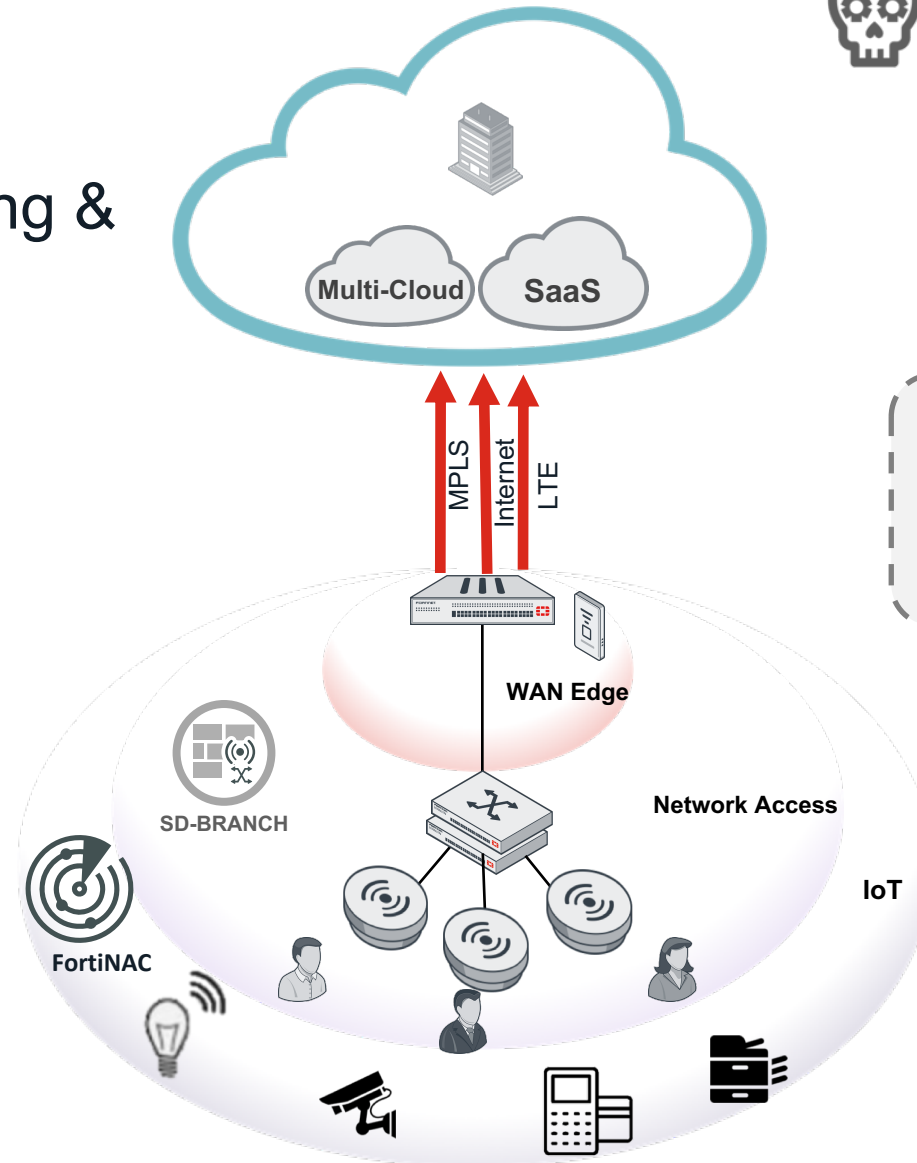


Secure SD-Branch



- **Single-Pane-of-Glass** Monitoring & Management, and Analytics

- Network Segmentation
- Guest Management
- Network Access Control (NAC)
- User & Entity Behavior Analytics
- Presence Analytics
- Surveillance
- Voice Communications (VoIP)
- Internet of Things (IoT)
- Zero Touch Deployment



FORTINET.