



CITY ENGINEERS ASSOCIATION OF MINNESOTA  
*Engineering Our Cities' Futures*

# Public Art

## It Takes Work to Look This Good!

- *Teresa Sweetland – Forecast Public Art*
- *Joe Rhein – City of Two Harbors / Bolton & Menk*
- *Josh Johnsen – City of Rochester*
- *Sean Walther – City of St. Louis Park*



# THERESA SWEETLAND

**Forecast Public Art  
Executive Director  
and *FORWARD*  
publisher**



# Agenda

- 1) Get to know me and my organization.
- 2) See public art in a new way.
- 3) Share an example of how public art can be integrated into a major public project in unexpected ways.





Kid









# FORECAST

PLANNING + ENGAGEMENT

CREATIVE STUDIO

LEARNING INSTITUTE

INSPIRATION

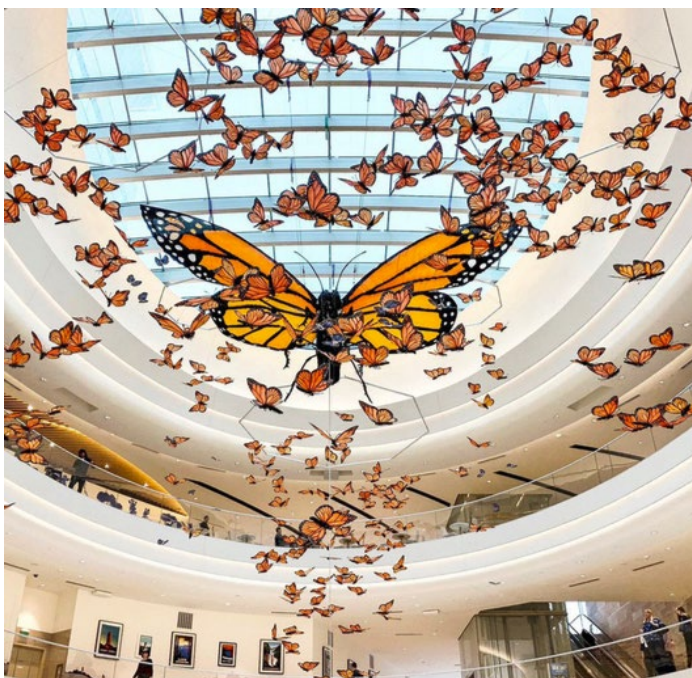


WHAT KIND OF FUTURE DO WE WANT TO  
BUILD TOGETHER?



Forecast is a nonprofit organization that activates, inspires, and advocates for public art that advances justice, health, and human dignity.





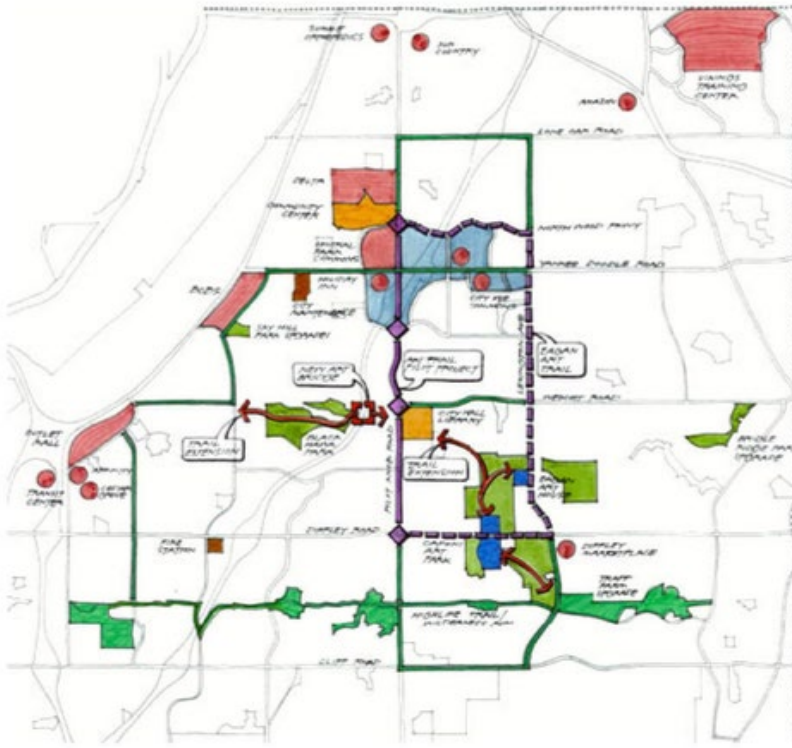
## COMMISSIONING + CURATION

Artists and creativity can play a vital role in project and development efforts. The experienced consulting team at Forecast is ready to help!

- **Artist Commissioning:** We help you determine your goals for a public art project, and facilitate the artist commissioning process, including RFQ creation, artist selection, implementation and project management.
- **Public Art Curating and Programming:** Let us help you plan, develop, and manage public art programming. Our experience includes creating exhibits, planning events and managing temporary installations.
- **Artist Residencies:** In-depth residencies allow participants to discover how art, community and big ideas shape our shared spaces. We match artists with schools, private developments and neighborhood organizations to increase understanding of the possibility for and impact of public art.







## PLANNING + ENGAGEMENT SERVICES

Artists and creativity can play a vital role in planning and engagement projects. The experienced consulting team at Forecast is ready to help!

- **Community Engagement:** Engage individuals, groups and organizations through art to address issues that impact health and wellbeing.
- **Public Art and Memorial Planning:** Create an actionable public art plan that supports existing public art efforts, programs, and organizations, enhances arts and culture activities, and reflects the area's diversity.
- **Public Art Mapping:** Tour, analyze and develop maps to showcase prime locations for public art and place-based activities.
- **Community & Environmental Scanning:** Research and understand the conditions of your city or neighborhood, interpret relevant data and analyze existing and future plans to help identify opportunities for public art and place-based activities.
- **Public Art Program + Collection Equity Reviews:** Identify discrepancies in public art collections as related to race, gender, immigration status, and more. We will help you identify gaps, prioritize initiatives, set program goals, assign accountability, and measure the impact of initiatives.





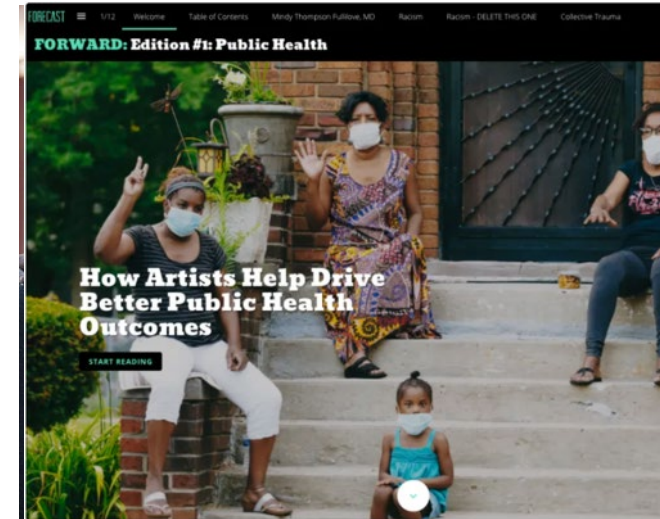


Through our [Learning Institute](#) we offer workshops, training, fellowships, and other in-person and online learning opportunities.





Through our [Forward](#) series and digital publication, we curate and create thought-provoking content through our magazine, website, local and national convenings, and public events.



# WHERE WE WORK

**Our team works in communities across the country and globe.** These are the U.S. locations where we have been on the ground—meeting with stakeholders and partnering with communities to meet their public art and engagement needs—and our list is growing by the day.



WORK WITH US

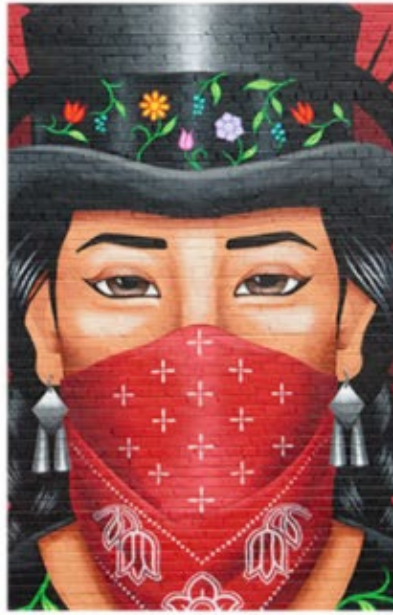
# FORECAST



# OUR TEAM









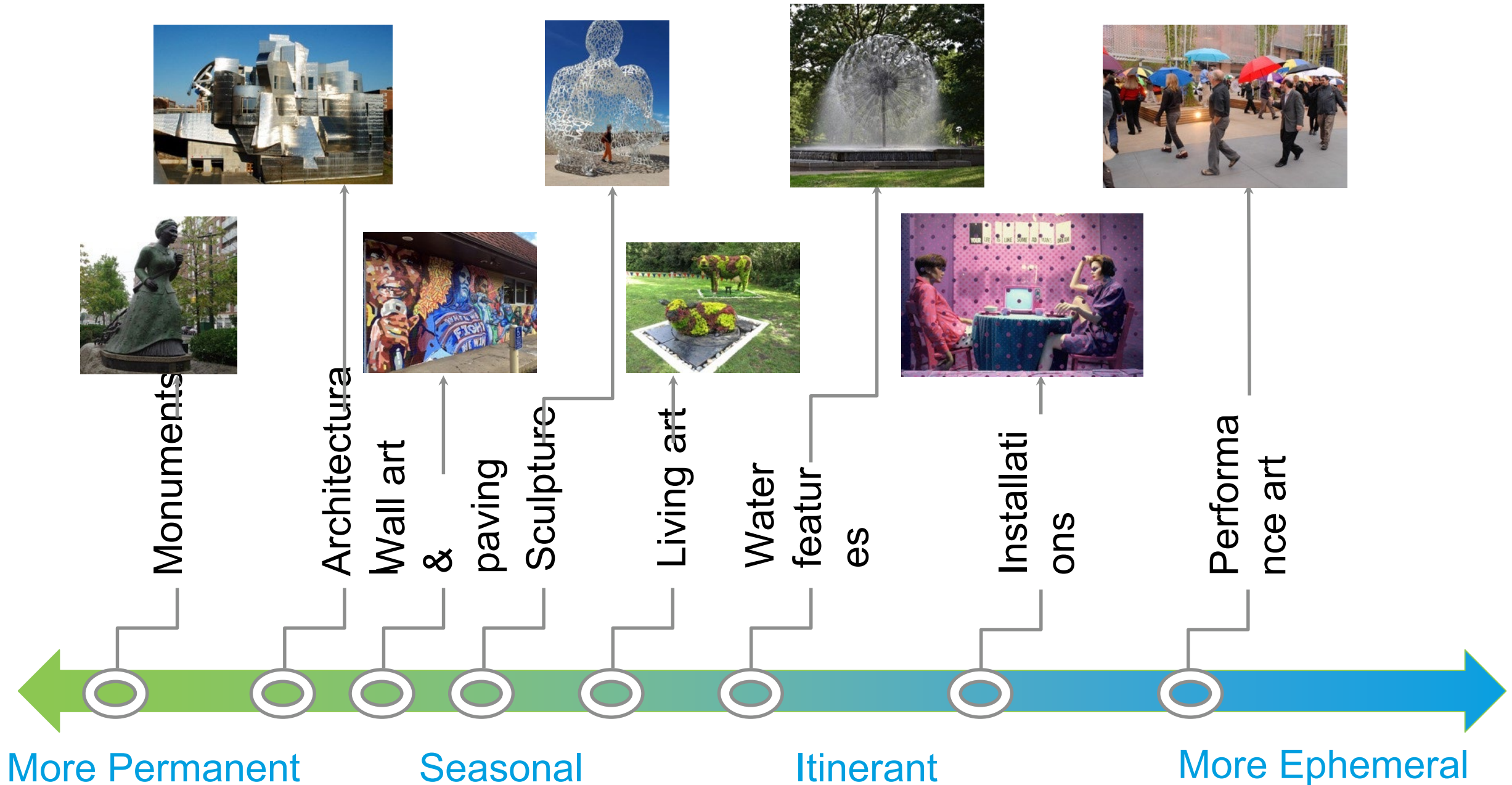


WHAT  
IS  
PUBLIC  
ART?

# Beyond Murals, Memorials and Monuments...

**Public art** is defined as works of arts and creative activities that are free and accessible to the public, including visual art, dance, festivals, music, theatre, literature, and photography.

# TYPES OF PUBLIC ART





# LOCATIONS FOR PUBLIC ART



Sidewalks



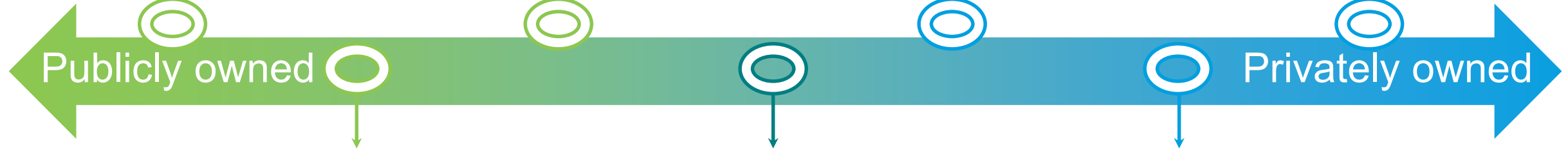
Parks



Fringe spaces



Accessible building interiors



Publicly owned

Privately owned

Squares

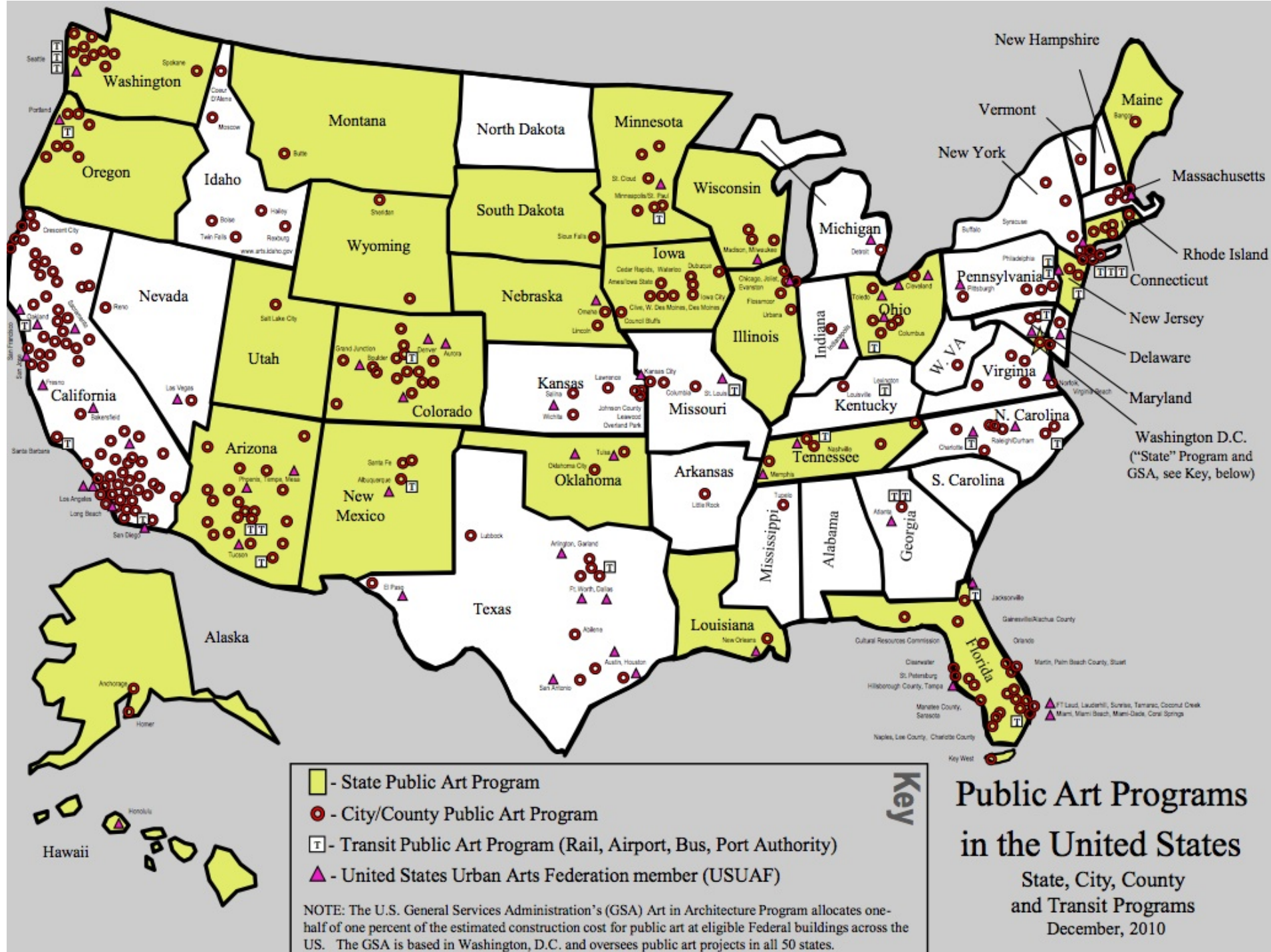


Transit stations



Private plazas





# FUNDING MODELS

- Percent for Art Funding
- Billboard tax
- License Plate fees
- Hotel/motel tax
- Gambling proceeds
- Tax return check box
- Postage stamps
- Microgrants and crowd-funding
- Meals hosted to fund
- Auctions—online and in person.
- Percent of private development fees
- “Golf tax” (\$1 from each bag rented)
- Graffiti abatement funds
- Corporate sponsorships
- Private gifts and loans
- Trading your art for other art
- Bartering with artists
- Grants and sponsorships



# Minnesota Public Art Programs

Since that 2010 data was collected, several cities in MN have adopted ordinances, or stepped up their programs:

- St. Paul
- Eagan
- St. Louis Park
- Duluth
- Mankato
- Rochester
- Brooklyn Center

Over \$1 Million per year is spent on public art each year across the state of Minnesota and Forecast Public Art has worked in over 40 others cities seeking to commission a new artwork to integrate into a public or private improvement project:  
additional millions on public art just for Nicollet Mall!















CUSTOMER  
PARKING ONLY  
UNLAWFUL TO  
PARK HERE  
AT ANY TIME  
EXCEPT TO  
SERVE THE  
CUSTOMER













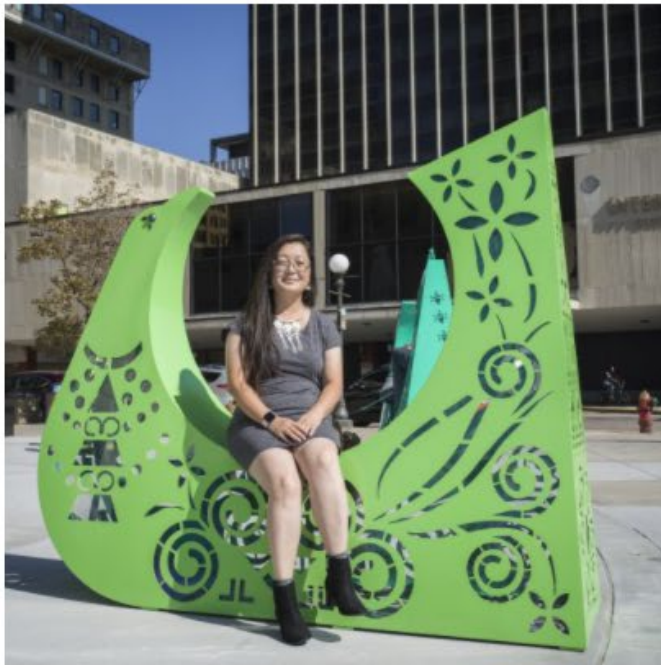
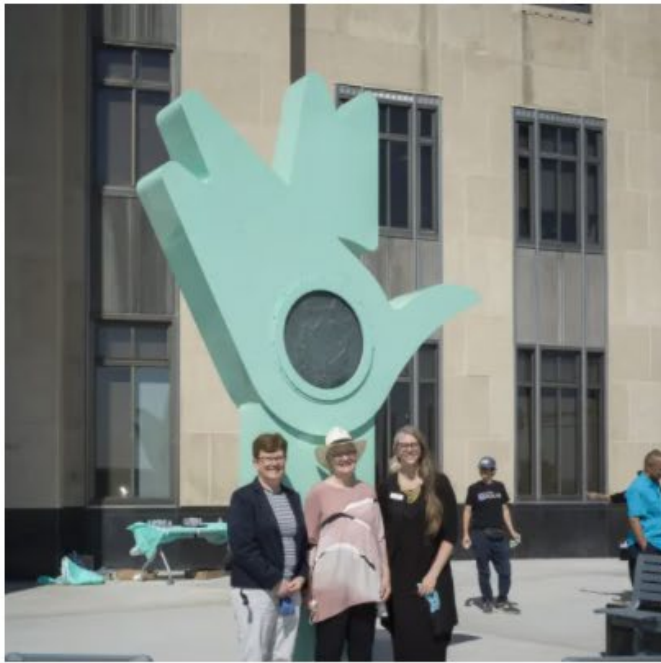








































**DON'T WORRY,  
WE'LL HOLD  
HANDS AGAIN.**



**RESIST  
COVID  
TAKE 6!**



**LIFE IS BEAUTIFUL!!**

**STAY SAFE  
IF POSSIBLE  
STAY HOME  
WASH YOUR HANDS  
COVER YOUR FACE**



**RESIST  
COVID  
TAKE 6!**

LAMAR 21044

21044

PORCHES















Before I die

Before I die I want to Bring

Before I die I want to Play

Before I die I want to Work

Below I do I want to \_\_\_\_\_

Below the table, there is a small graphic of a person's head and shoulders, possibly a logo or a stylized image.

Before I die I want to travel the world become a citizen

Where I die I want to

die I want to

become a Riky man busta

I want to have a gift for someone.  
I want to have children. I want to have a job with money.  
I want to have a house.

Witness someone fall  
WALK WITH CHRIST  
help someone see the light  
SEE THE GOSPEL

Spread  
HAE FARM  
Have a Family  
Only Live

And love ← HELP YU  
BEAUTIFUL HOOD!!!

Before I die I want to  
See my future grandchildren  
See everyone be able to  
Make many children  
Make many children  
Make many children

Before I die I want to Zip Line - on a local  
See a show @ PEDRO  
 Before I die I want to be Rich  
Climb Joshua Tree

before I die I want to date a ballerina  
*become a friend*  
 before I die I want to fall madly in love  
*and of mercy* have a life above

before I die I want to skydive

before I die I want to MAKE ENOUGH \$ TO NE

before I die I want to HAVE A

before I die I want to Walk my daughter down  
The AISIE  
go around the world

before I die I want to eat my heart out of this world

Drive on the road

...as I should  
**MEOW!**  
Before I die I want to...

Before I die I want to \_\_\_\_\_

Before I die I want to Play piano in a

Before I die I want to live  
Before I die I want to make

Before I die I want to BECOME AN  
EVER START MY OWN

Before I die I want to Travel

Before I die I want to SPEND

Before I die I want to \_\_\_\_\_

WILL  
TELL  
re a manly +

be happy  
make a difference

Department  
OF THE CH  
Dan

...one with Be...

AUTHOR

1 in Love

and every

STOP









© WAYNE MORAN  
[www.LetThereBeLightFineArt.com](http://www.LetThereBeLightFineArt.com)

The  
times  
they are  
a-changin'

















**11th Street Bridge Park, Washington,**





Café Service Wall

Sculpture Lawn

Rotating  
Community Art

Hammock  
Installations

Navy Yard Screen

Navy Yard Wall

Lighting Under Bridge  
Navy Yard Path

Pattern on  
Central Plaza

Audio / Video  
Installations in Cafe

Porch Ceiling  
Installation

Lighting Under Bridge  
Anacostia Drive

Café Void Space

Anacostia Approach

Good Hope Underpass



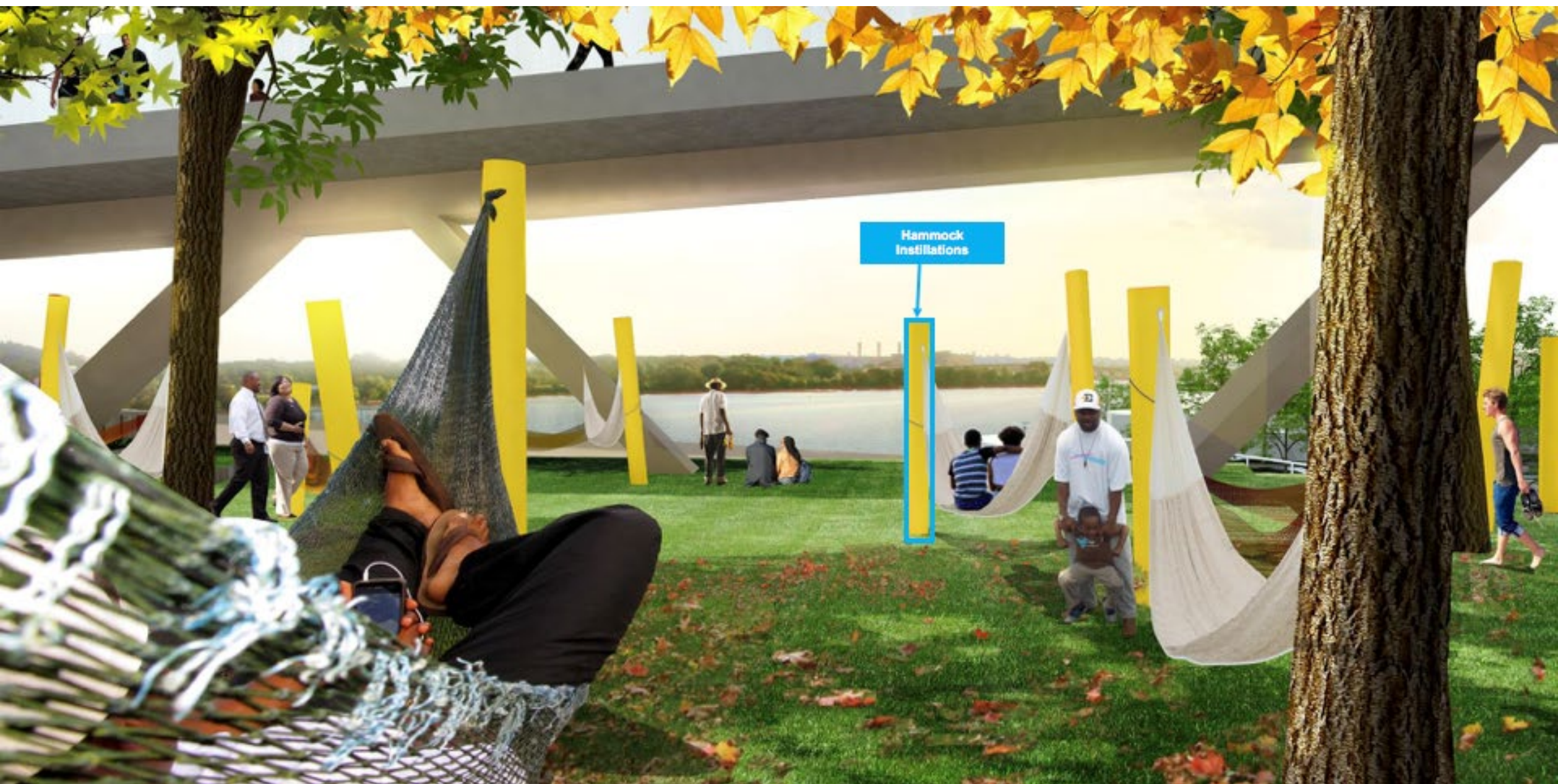


Navy Yard Wall









Hammock  
Installations





Pattern on  
Central Plaza

WHAT'S GROWING  
this time of year?  
BEANS  
Lettuce  
Spinach  
Peas  
Cucumbers  
Zucchini

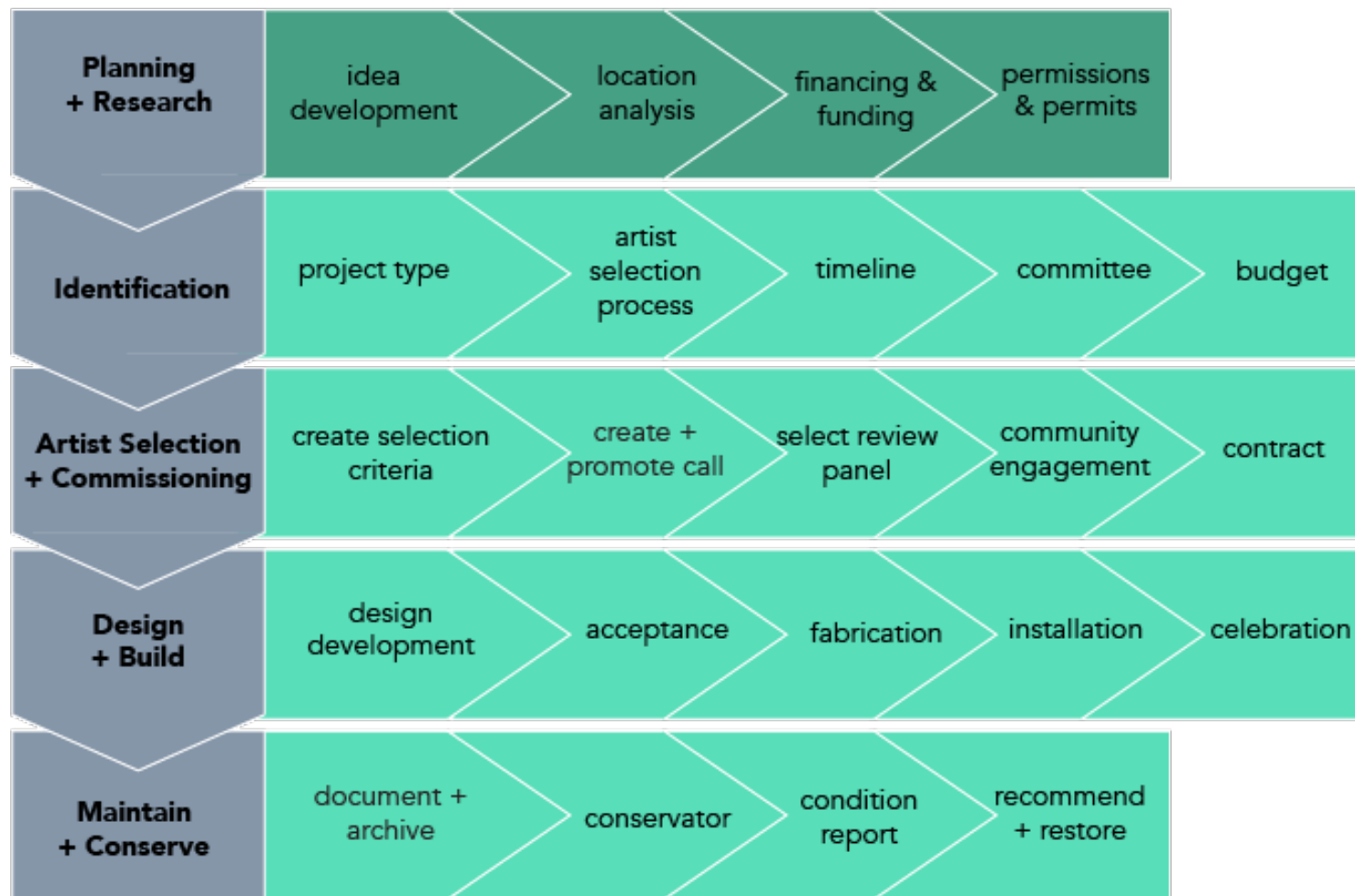




Audio / Video  
Installations in Cafe

Rotating  
Community Art





#### **Funding Sources**

Government  
Private  
Combination

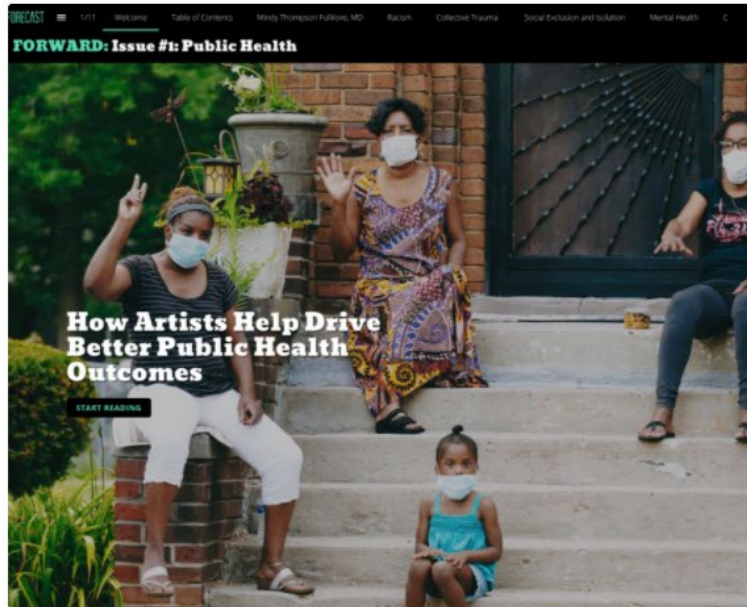
#### **Project Types**

Artist-Generated  
Community-Generated  
City-Generated  
Gifts & Memorials  
Design Team  
Artist in Residence

#### **Selection Process**

Open RFP  
Open RFQ  
RFQ Roster  
Invitational RFQ  
Direct Commission  
Self-Initiated Productions  
Direct Purchase

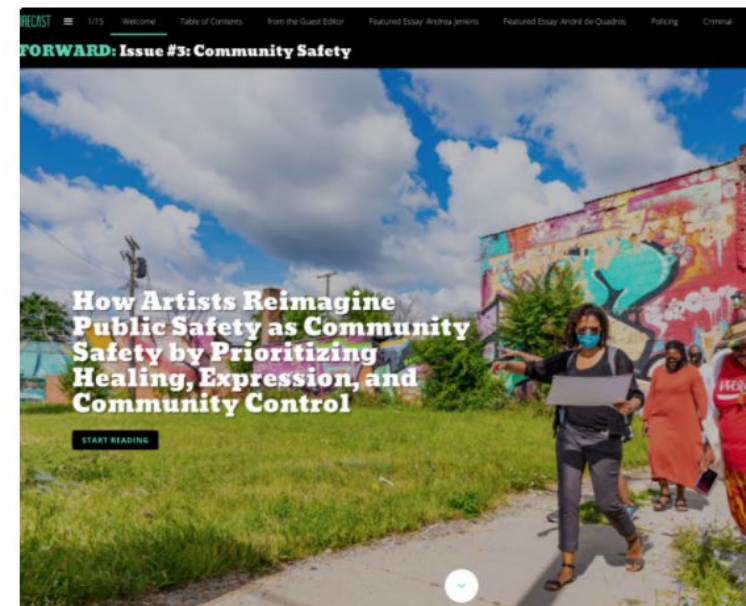
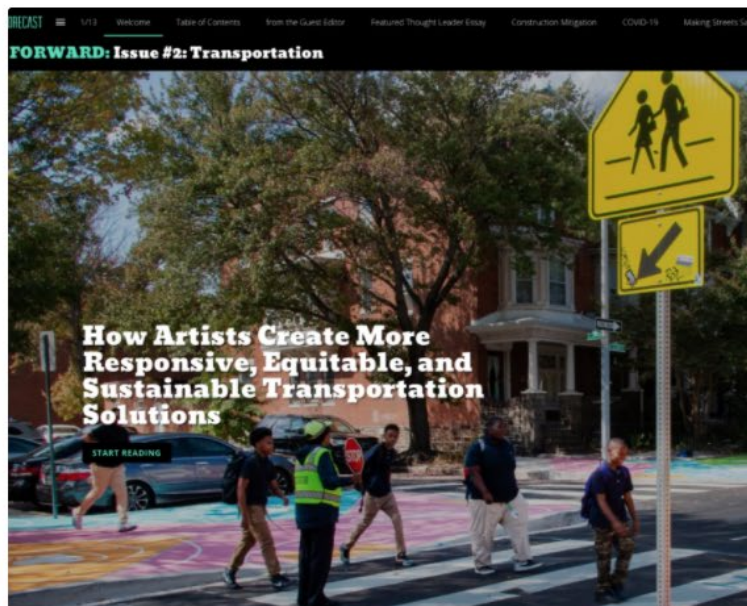




**This new digital publication and conversation series highlights how artists are partnering with cities, institutions and communities to courageously tackle the vital issues of our time.**

*FORWARD* aims to show decision-makers how artists are critical partners in addressing pressing issues in America, from public health to the fate of our climate. We invite policy makers, public health workers, urban planners, architects, artists, city managers, funders—anyone interested in working to advance justice, health and human dignity—to engage, contribute and learn with us.

*FORWARD* is free, allowing us to reach people anywhere, without barriers to access. We hope you will read and share the content widely.





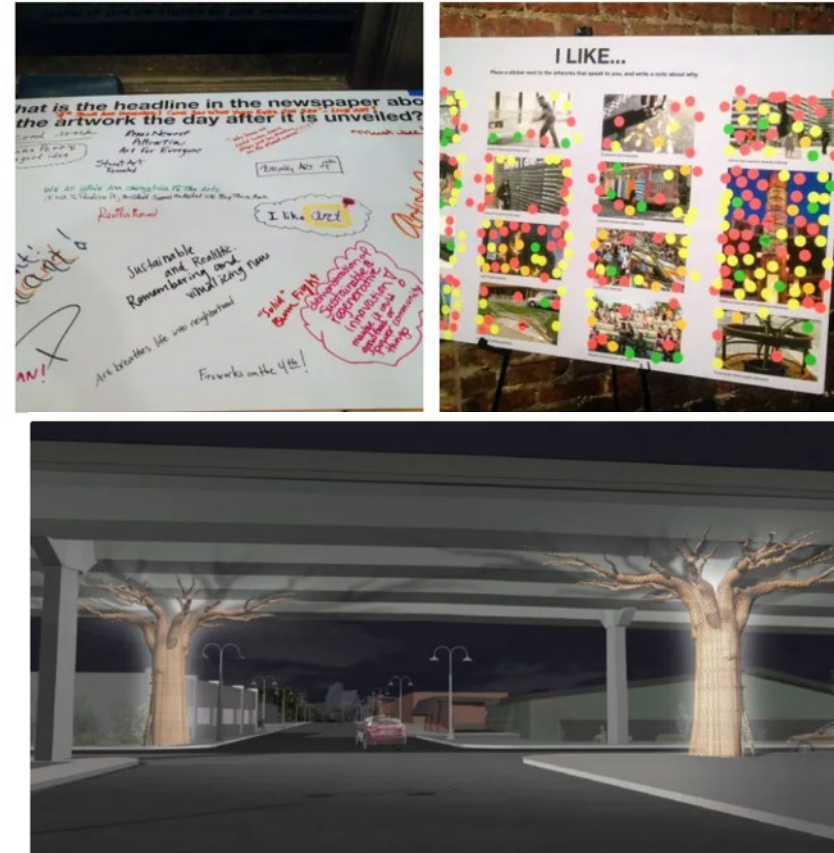
# MAKING CHANGE

FORECAST

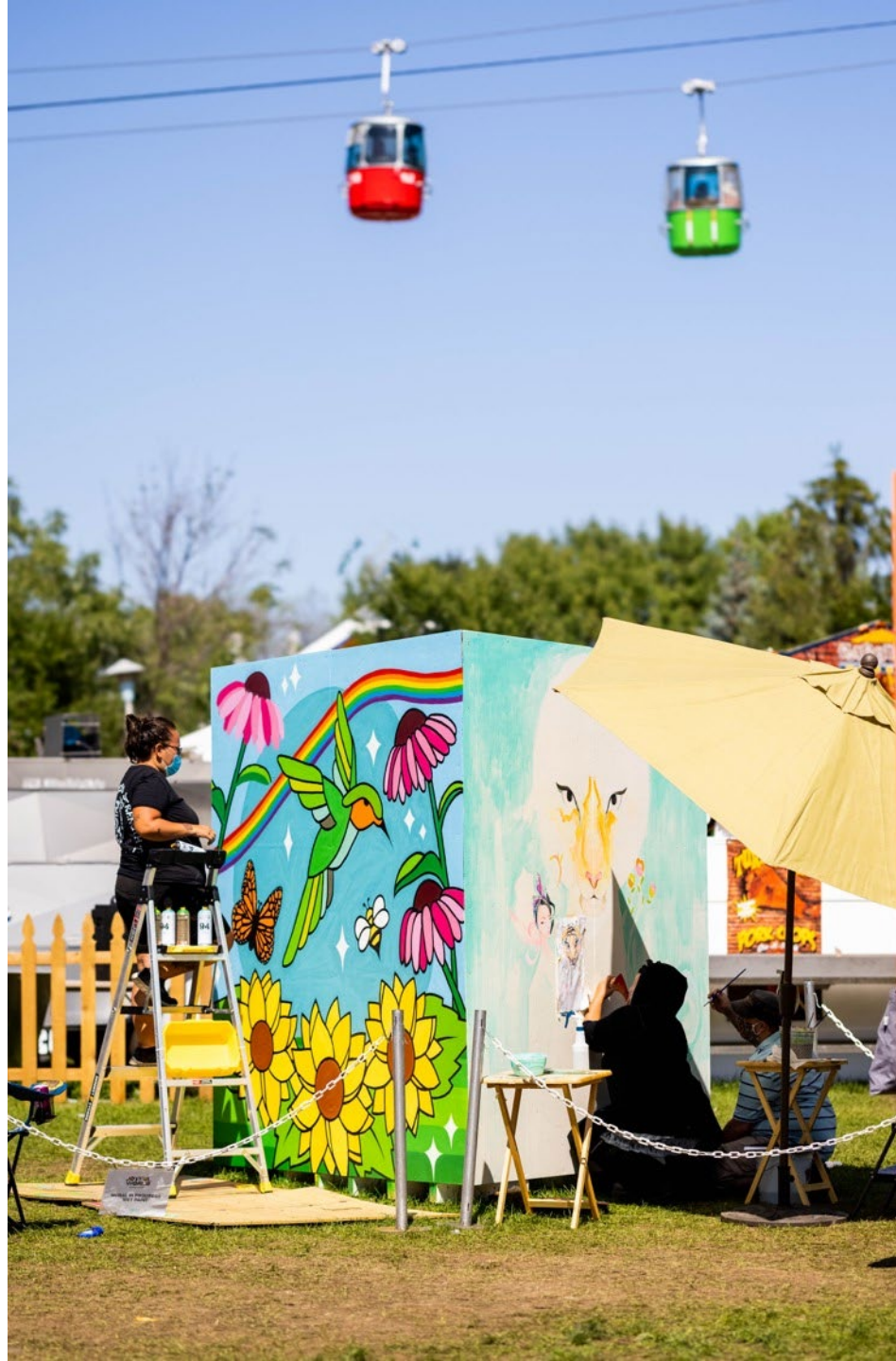
## Making Change: E 4th Street Engagement | Reno, NV

Welcome to the first issue of Making Change, Forecast's quarterly consulting newsletter! We're excited to share with you the projects we have been working on across the country. In each issue, we'll share the who, what, and how, to give you insight into our process. This issue features engagement work we did with the City of Reno, NV, and I'm sharing more about myself as the Director of Programming. Thanks for being here.

— Jen Krava









# THANK YOU!

Theresa Sweetland  
Executive Director

[theresa@forecastpublicart.org](mailto:theresa@forecastpublicart.org)

[www.forecastpublicart.org](http://www.forecastpublicart.org)





**FORECAST**



# 2022 CEAM Annual Conference

## Public Art

**Two Harbors, MN**  
**Wastewater Treatment Plant**  
**“Art in an Unexpected Place”**

Joe Rhein

January 27, 2022

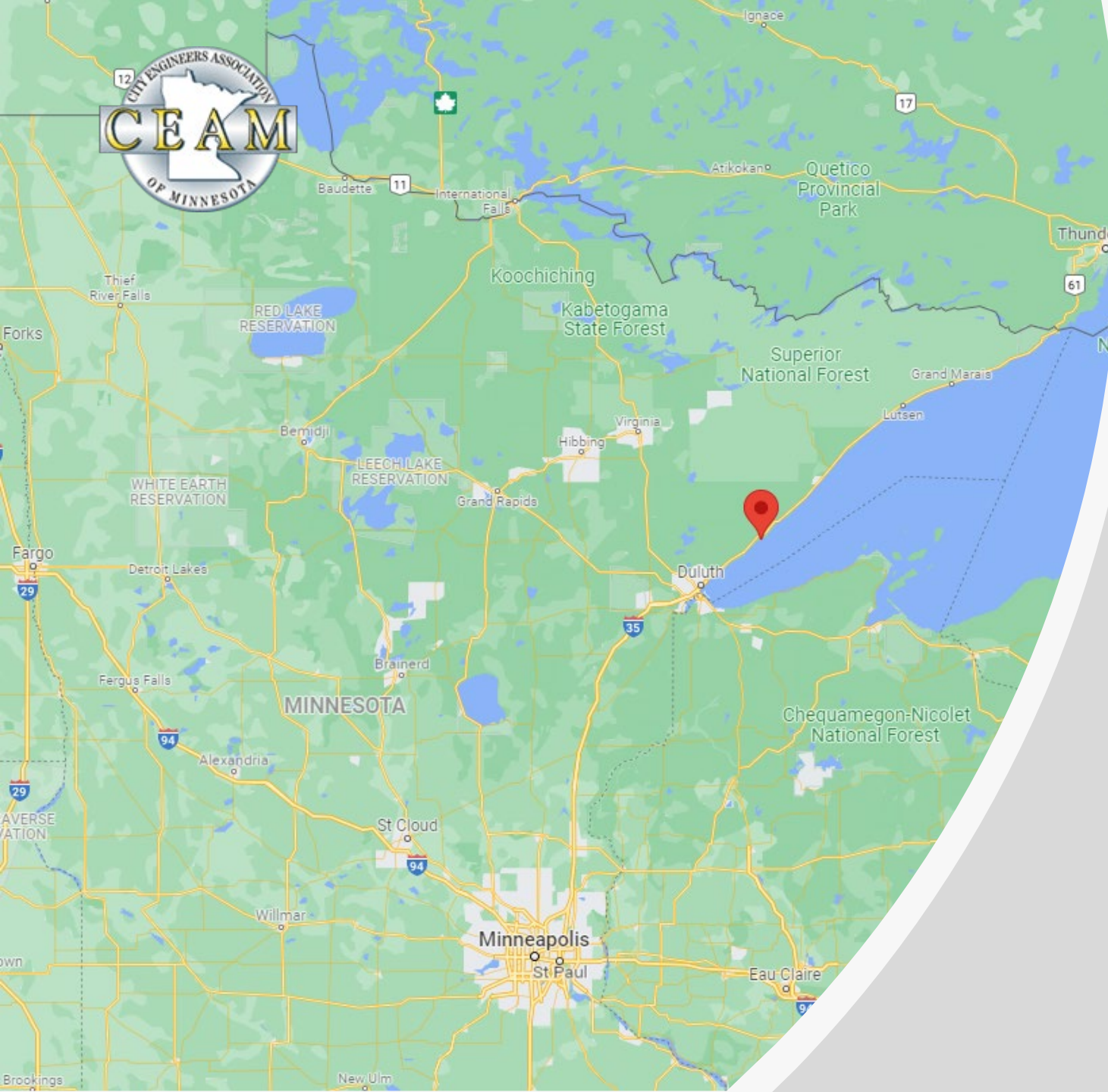


CITY ENGINEERS ASSOCIATION OF MINNESOTA  
*Engineering Our Cities' Futures*





Real People. Real Solutions.



# Two Harbors, MN





# City of Two Harbors







# Location Plan







# Existing WWTP







# Existing & Proposed



City saw opportunity for something more...



Usual Aesthetic Elements:

- Landscaping
- Fences / Walls





# Artistic Community



STAY INFORMED ABOUT LOCAL ARTS AND EVENTS!

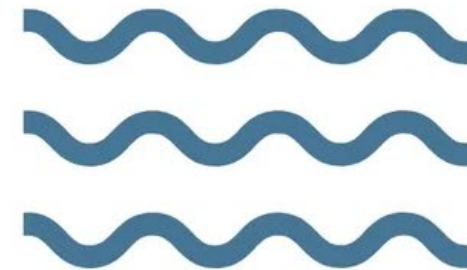
## TWO HARBORS AREA ARTS



Our Mission



Chalk.a.Lot



**HARBOR WAVE  
PROJECT**

Harbor Wave Project

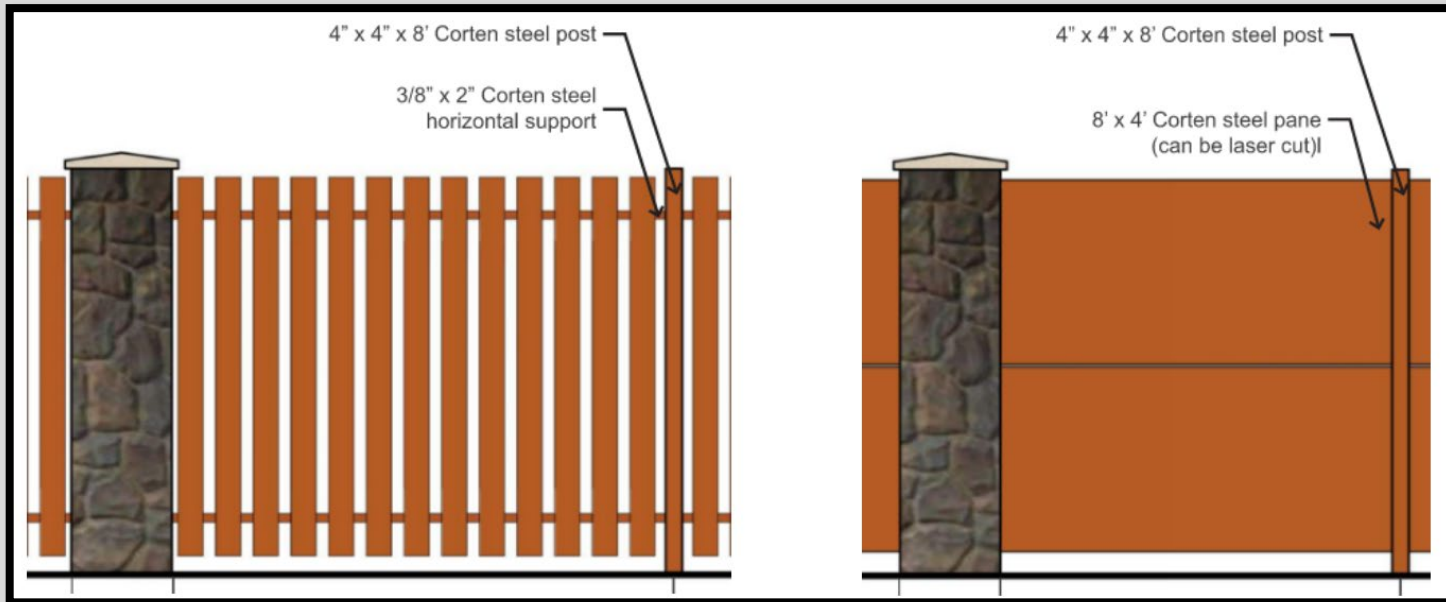




# Fencing



Discussion began with standard panels and lighting options



## Laser-cut Panel Backlighting



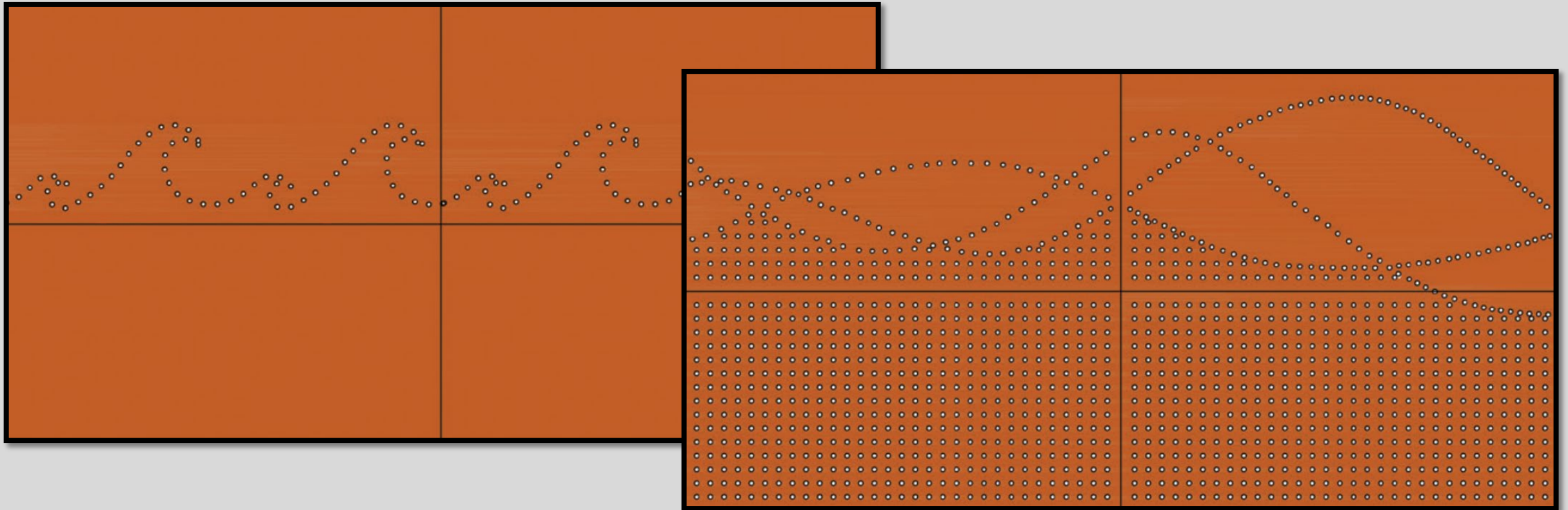




# Enhanced Fencing



Laser-cut metal panels with custom graphics and back-lighting effects



Wave Patterns

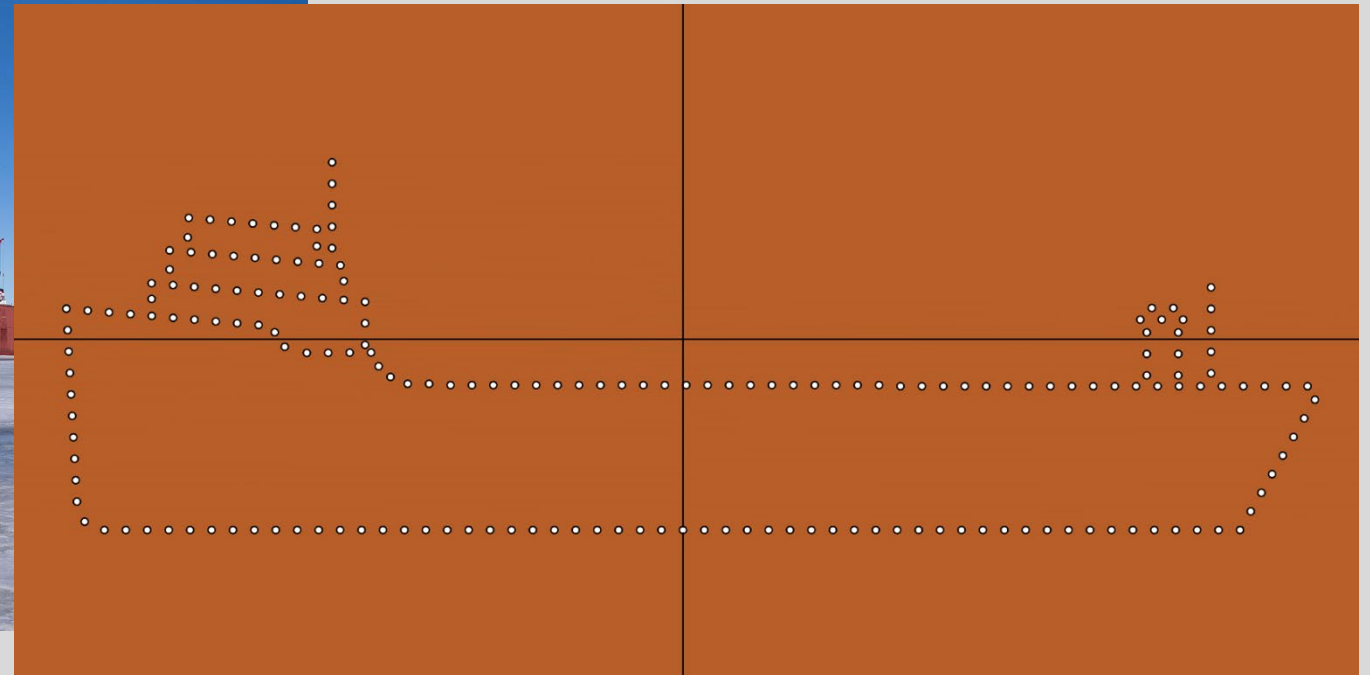




# Enhanced Fencing



Laser-cut metal panels with custom graphics and back-lighting effects



Ore Boat

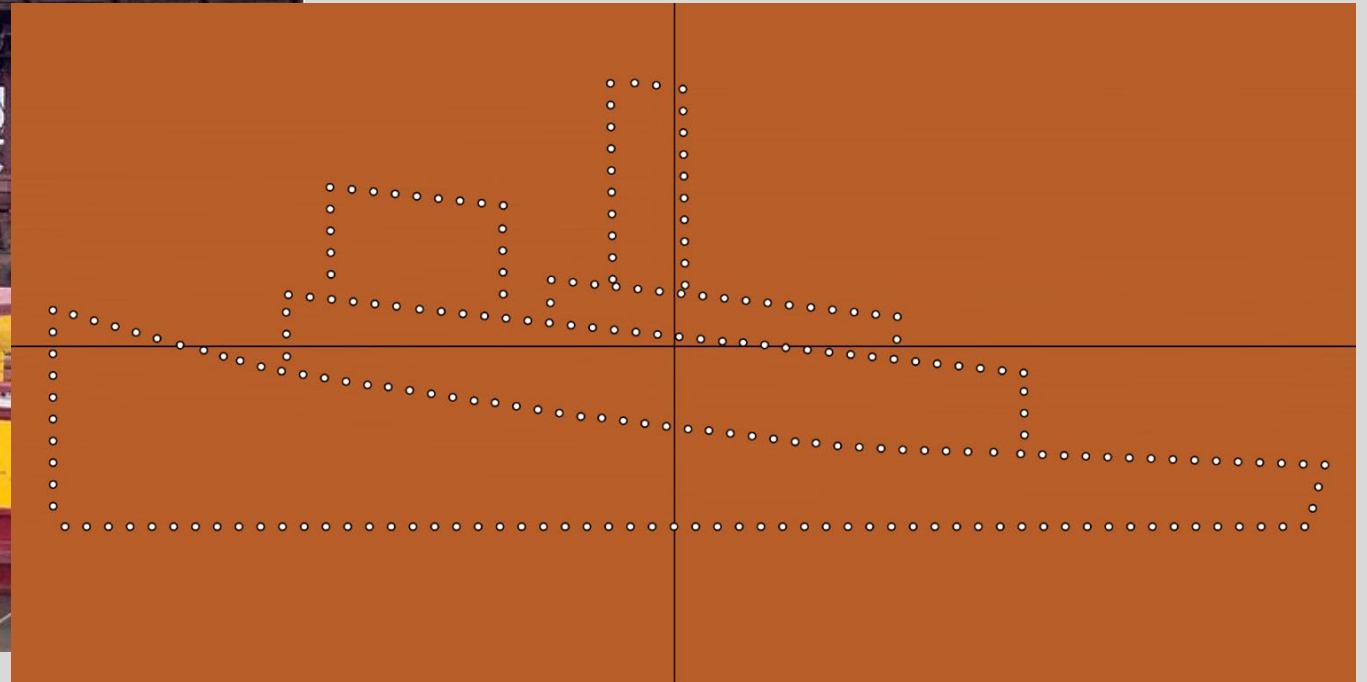




# Enhanced Fencing



Laser-cut metal panels with custom graphics and back-lighting effects



Edna G – City's Historic Tugboat





# Mural Canvas



View of new tanks from walking path

Tanks create potential 'canvas' for local artists







# Mural Canvas

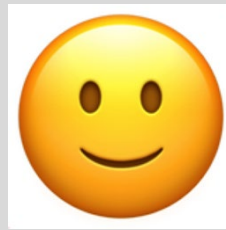




# 2022 CEAM Annual Conference

**Two Harbors, MN  
Wastewater Treatment Plant  
“Art in an Unexpected Place”**

**Thank you!**



**CITY ENGINEERS ASSOCIATION OF MINNESOTA**  
*Engineering Our Cities' Futures*





# Public Art

---

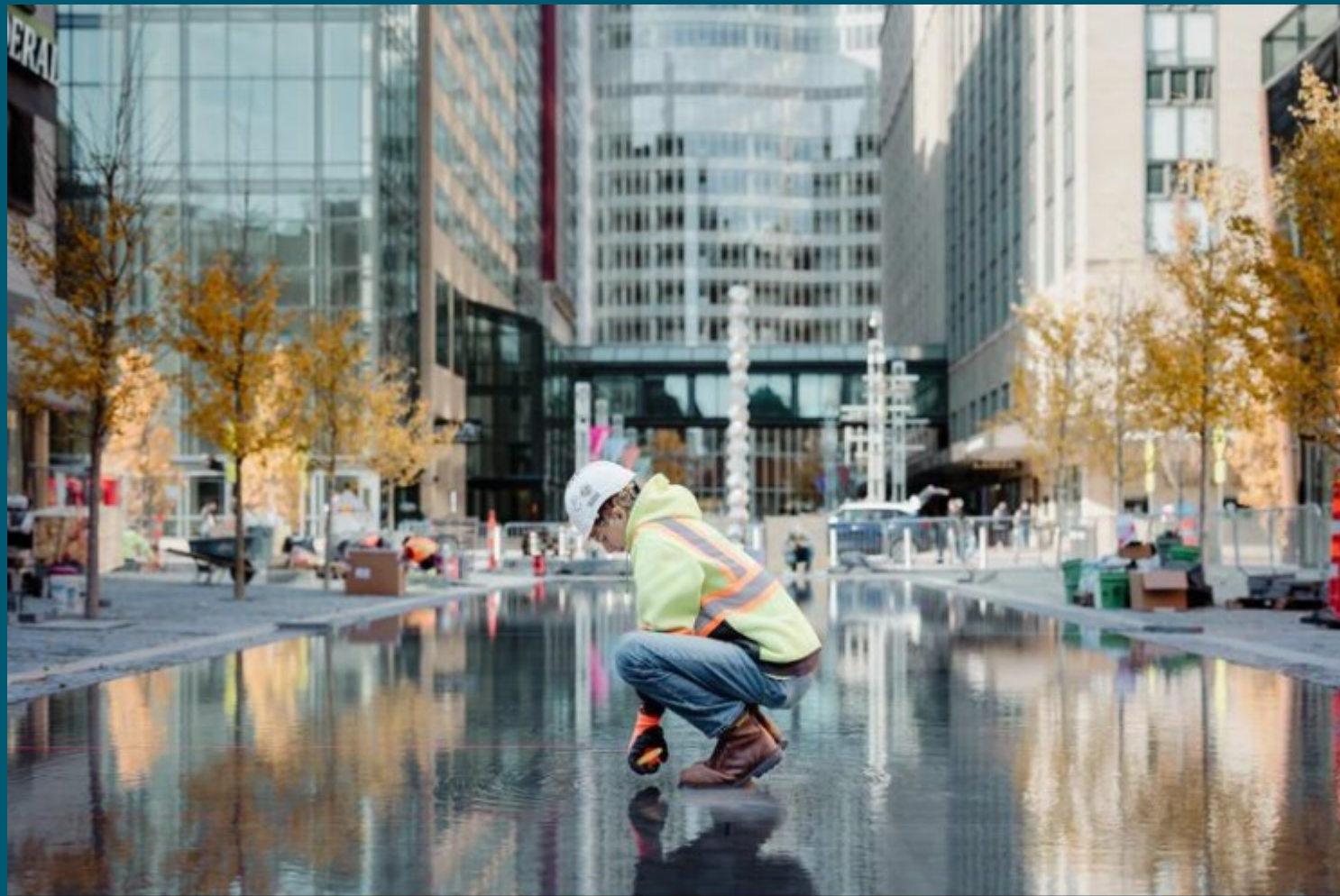
Josh Johnsen

*January 2022*



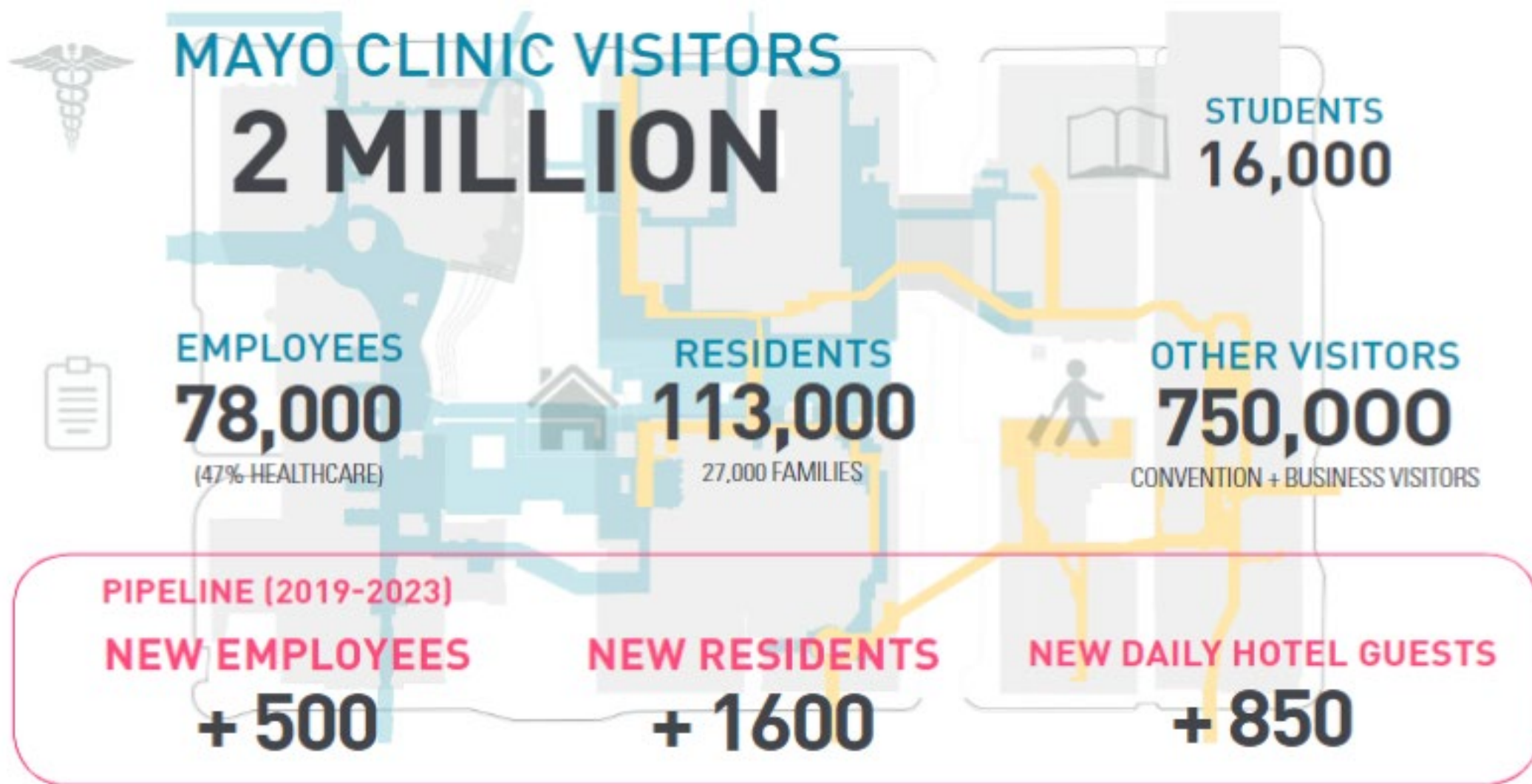


# Public Art Heart of the City





# Heart of the City Bringing Visitors and Residents Together



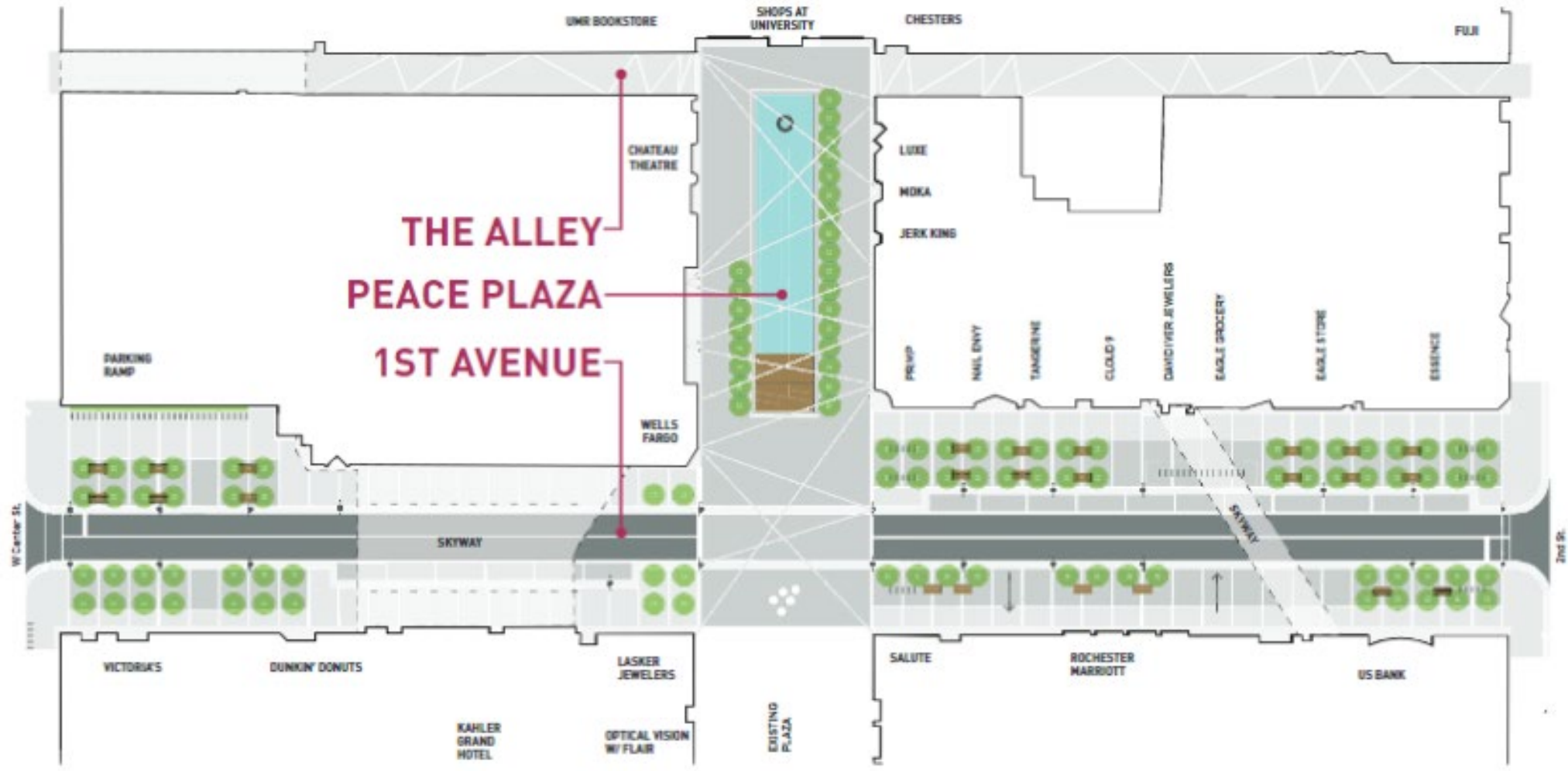


## Heart of the City Project Area





## Heart of the City Site Plan





# Artist Selection and Concept Development





# HEART OF THE CITY COMMUNITY UPDATE: MEET THE ARTISTS

FRIDAY,  
OCTOBER 18  
AT THE  
CASTLE



**Eric Anderson**  
Rochester, MN



**Ann Hamilton**  
Columbus, OH



**Rafael Lozano-Hemmer**  
Montreal, Quebec



**Iñigo Manglano-Ovalle**  
Chicago, IL





# Peace Fountain Removal to Peace Fountain Remain in Place

Dedicated by local sculptor Charles Gagnon

June 25, 1989





# Peace Fountain Meetings with Arlyn Gagnon

## WHAT: Location

### HOW:

- Remain in plaza
- Shift to create to larger plaza area

## WHAT: Design Updates

### HOW:

- Integration into updated plaza design
- New basin size and shape
- New efficient mechanicals
- New lighting to highlight sculpture

## WHAT: Next Steps

### HOW:

- Ongoing collaboration with Arlyn Gagnon
- 30th Anniversary event June 22, 2019
- Potential exhibit of sculptor Charles Eugene Gagnon





## Peace Fountain Originally Dedicated in 1988





# **“Town Well” to “A Not So Private Sky”**

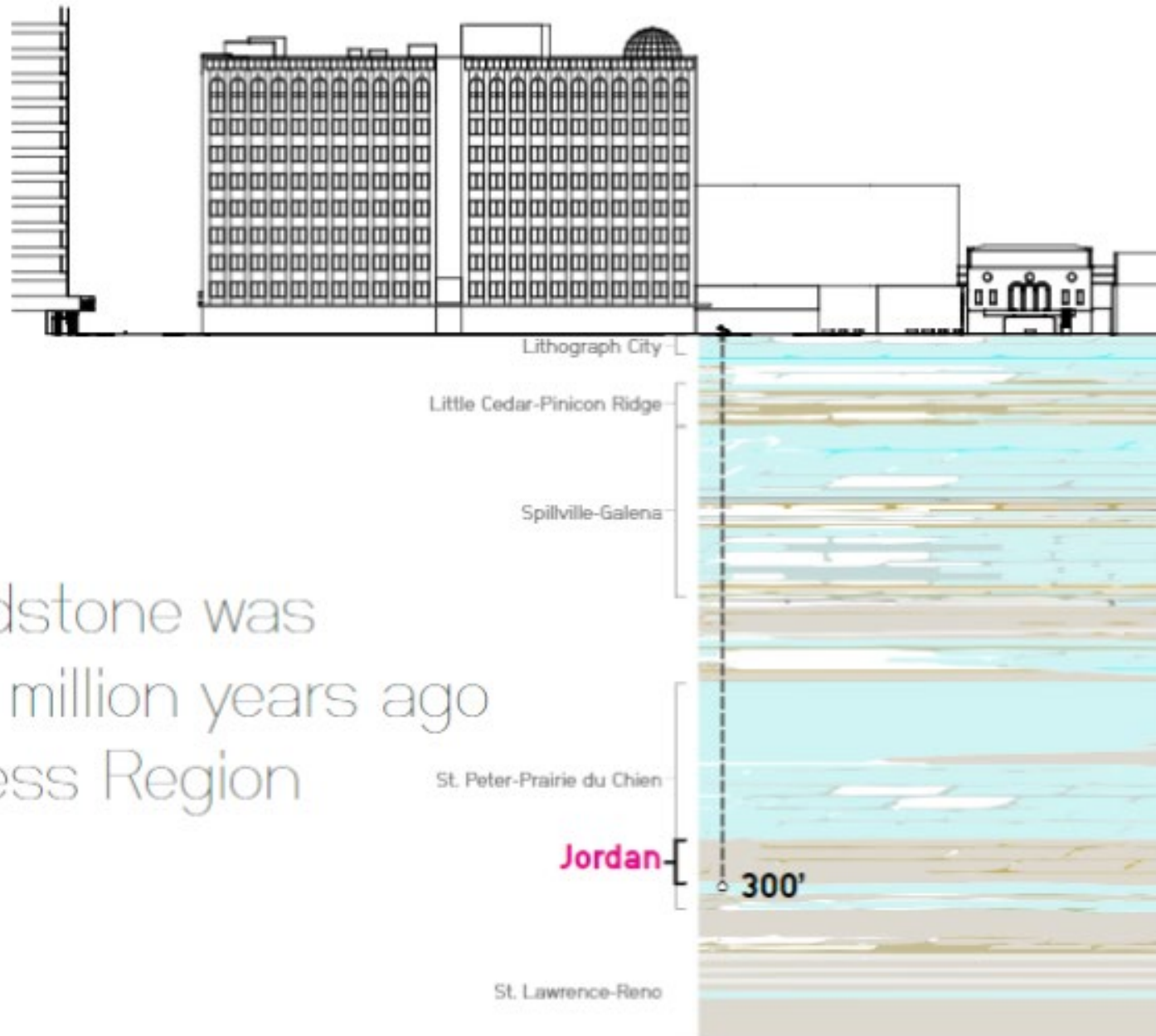
“A Not So Private Sky” features a vertical tower of 16 dice-shaped, stainless-steel objects with 12 faces called dodecahedrons. In science, a dodecahedron is one of 5 Platonic Solids, or any of the five geometric solids whose faces are all identical, regular polygons meeting at the same three-dimensional angles





## Geologic Time

Inigo Manglano-Ovalle



### Inigo's First Concept

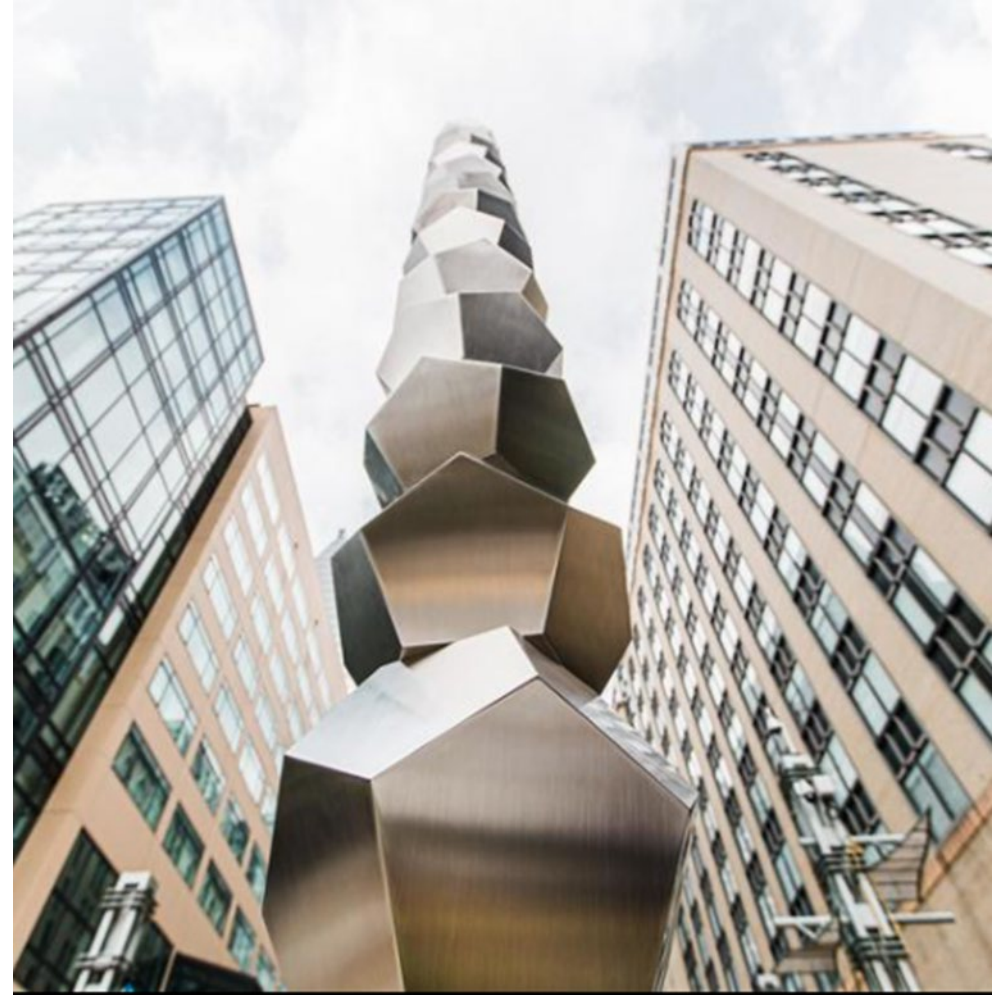
Jordan sandstone was  
formed 500 million years ago  
in the Driftless Region







## Revised Concept: “A Not So Private Sky”





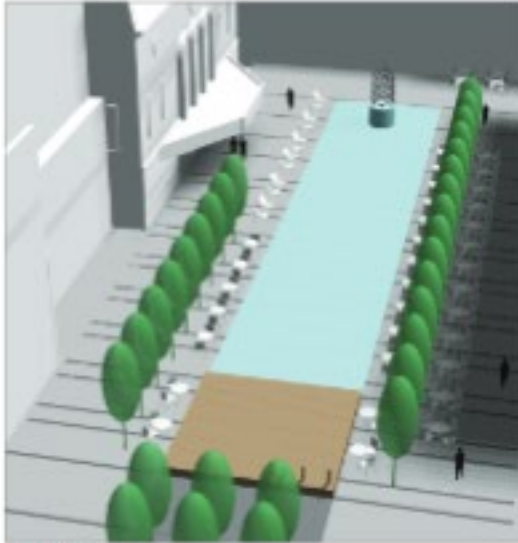
# **“Begin Again” to “A Song for Water”**

“Spanning over 250 feet...A Song for Water was chosen to pay homage to the original inhabitants of the land that Rochester was established on. This reaches into history and speaks to our city’s present and future. The rich language of Westerman’s poem affirms that the plaza in the Heart of the City was first a Dakota place. The piece is intentionally designed to interact with the water and fog in the plaza. As the phrases connect like water, we are reminded that it is our first medicine and through it, we connect.”

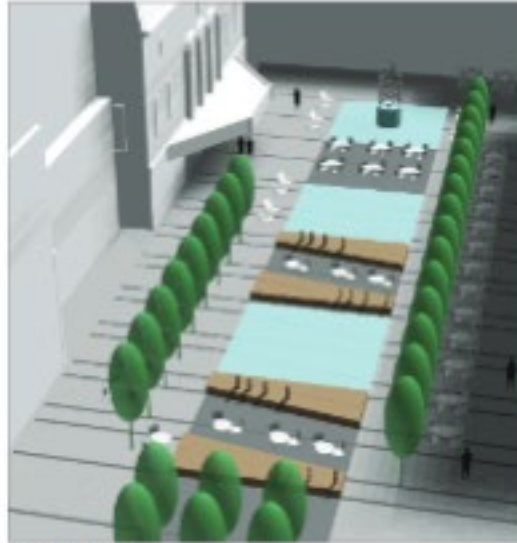




# Layout Options



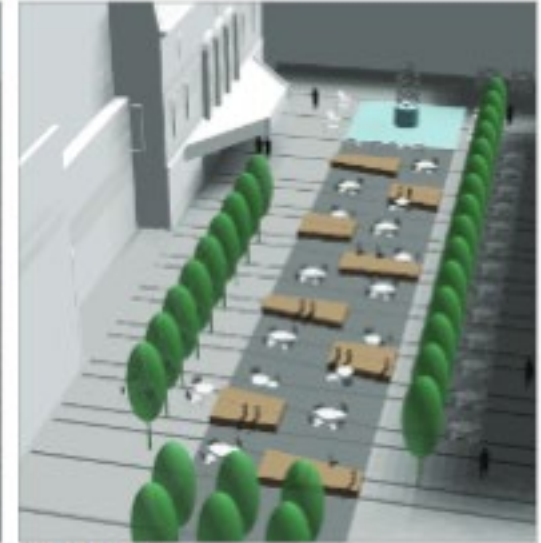
1 - Maximum water



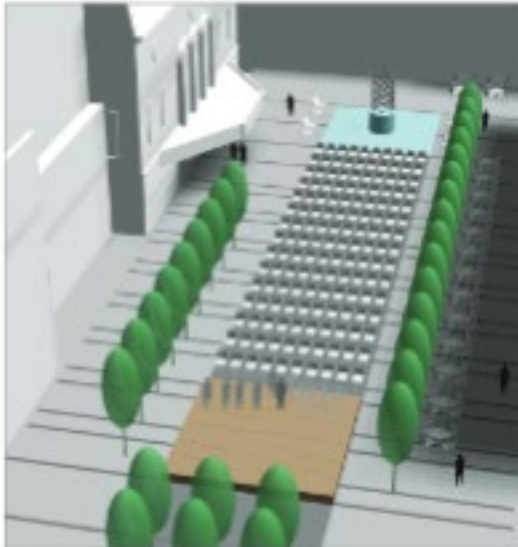
3 - Three fountains



5 - Bookend water feature with seating



7 - Flexible plaza



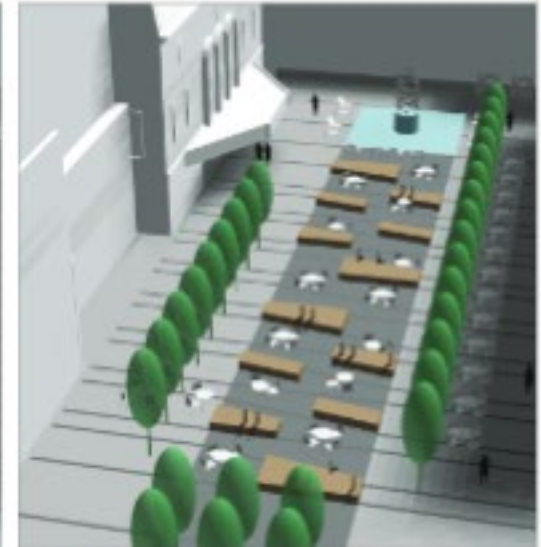
2 - Stage



4 - Dinner setting



6 - Bookend water feature with seating



8 - Flexible plaza with maximum seating







# Ann Hamilton, A Song for Water (2021) with De Wakpa Tanja Odowan / Song for the Mississippi River (2018) by Dr. Gwen Westerman

“A Song for Water with De Wakpa Tanja Odowan / Song for the Mississippi River features fragmented words and phrases carved onto the pavers that make up the plaza grounds. Internationally acclaimed artist Ann Hamilton created the granite carvings using the words of poet and Dakota historian Dr. Gwen Westerman.”  
(Rochester Mom Blog)





THE MOTION OF THE WORLD BEGAN WARMTH	WAS LIFE THE WIND WAS HER BREATH THE WORDS WERE MAGIC THE WORLD WAS	SPOKEN INTO BEING WITH THE FIRST WORDS
THE WORLD WAS SPOKEN INTO BEING	WITH THE FIRST SPEAKING THEY SAID THE WORD EARTH AND THERE WAS EARTH	THEY SAID TREES AND THERE WERE TREES
THEY SAID THE WORD EARTH AND THERE	WAS EARTH THINKING WOMAN SAID THE SONG OF CREATION SHE SAID FATHER	OF ALL LIFE AND LIGHT I AM SHE SANG
HUMANS AND CREATOR WERE SEPARATED	ANIMALS LIVED WITH HUMANS UP IN THE EARTH THINKING WOMAN RAYED TO	SUN THE INFINITE SOURCE OF ALL BEGINNING
THE SOURCE OF ALL BEGINNINGS BRILLI	ANT LIFE ENDING WATER FURNISHES THE VOICE OF A FATHER'S FATHER WATER	IS THE CAUSE OF WIND AND WEATHER
WATER BECAME THE CAUSE OF WINDS	BECAME THE CLOUDS WATER BECAME THE SEA WATER BECAME THE FURNISHING OF	SUN AND MOON WATER CHanneled LAND
SUN MOON AND WATER CHanneled THE	LAND WATER ENTERED THE WOMB OF THE EARTH WATER FLOWED FROM ABOVE	WATER MADE RIVERS LAKES AND OCEANS
LAKES TELL OF EVENTS AND MEMORIES IN THE	LIVES OF PEOPLE WATER RIPEDED ON THE BRANCHES OF OCEAN WATER SPREAD	EVERYWHERE WE ARE WATER HEAT LAND
WE ARE WATER WE ARE THE HEAT OF	BREATH WE ARE THE LAND WATER IS THE DIVINE SEED FARMER GOD TAUGHT THE	PEOPLE HOW TO SOW THE FIVE GRAINS
OTOKAHEYA IN THE BEGINNING DE DA	KOTA MAKOC THIS WAS A DAKOTA PLACE THE WATER WAS PURE THE WATER	WAKAN SACRED MNI PEJUTA TOKAHEYA
WATER WAS PART OF THE LAND AND THEREFO	RE PART OF THE PEOPLE AND IN THIS PLACE WE FLOURISHED FROM BDOTE WHERE	THE MNI SOTA WAKPA JOINS WAKPA TANKA
BEFORE VERITAS CAPUT LONG BEFORE	OTOKAHEYA IN THE BEGINNING DE DAKOTA MAKOC THIS WAS A DAKOTA PLA	CE THE WATER WAS PURE MNI PEJUTA
BEFORE MISI ZIIBI OTOKAHEYA IN THE BEGINNING	DE DAKOTA MAKOC THIS WAS A DAKOTA PLACE THE WATER WAS PURE THE	WATER WAS WAKAN PART OF THE LAND
WESTWARD ALONG THE BALLANTYNE RI	VER NAMED PUATSI BY THE CREE DAKOTA RIVER TO BDOTE THE BEGINNING	OF THE MISSISSIPPI OF THE NORTH
IN THE THE DAWN OF LIFE IN THE SHADOW	IN MYTHS OF ORIGINAL EMERGENCE IN A ROBE OF STARS AND PLANETS IN SWEET	BREATHING OF FLOWERS IN TURNINGS OF SUN
HUMANS AND CREATOR WERE SEPARATED	ON THE EARTH THINKING WOMAN MADE A PRAYER FOR SUN THE INFINITE SOURCE	OF ALL BEGINNING LIGHT AND ABUNDANCE
WATER IS THE SAME WATER EVERYTHING ENDS	TO BEGIN AGAIN THE WORLD WORKS IN A CIRCLE ONE BY ONE BY ONE FIRST THERE	WAS NOTHING THEN THERE WAS EVERYTHING
UNENDING WATER BROUGHT THE PULSE OF LIFE	RIVER WATER MURMURED THE VOICE OF A FATHER'S FATHER WATER BECAME THE	CAUSE OF WINDS WATER BECAME THE CLOUDS
EARTH RECEIVED THE WATERS AND THE DUST	EVERY RIVER EVERY FUTURE MOVES IN A DIFFERENT DIRECTION ETCHED INTO THE	MOUNTAINS BY WATER AND TIME
A SONG FOR WAKPA TANKA WE LISTEN WE LIST	EN LISTEN AND THEN ON THE EDGE OF DREAM THE SONGS COME CONDENSED	FROM THE FOG LIKE DEWDROPS ON CATTAILS
PEOPLE HAD TO BECOME SPIRITS TO MAKE	WAY FOR THE NEXT GENERATION IN HIGHWAY OF PERPETUAL PASSAGE	AT THE BEGINNING OF TIME AS THEY SANG
IN THE BEGINNING DE DAKOTA MAKOC THIS	WAS A DAKOTA PLACE THE WATER WAS PURE THE WATER WAS WAKAN	SACRED MNI PEJUTA TOKAHEYA HECA
PURE THE WATER WAS WAKAN SACRED MNI	PEJUTA TOKAHEYA HECA WATER IS OUR FIRST MEDICINE	THE WATER WAS PART OF THE LAND
TOKAHEYA HECA WATER WAS WATER IS	OUR FIRST MEDICINE THE WATER WAS PART OF THE LAND AND THERE	FORE PART OF THE PEOPLE AND THIS PLACE
THE WORLD WAS SPOKEN INTO BEI	NG THESE ARE THE FIRST WORDS IS THE FIRST SPEAKING THEY SAID	THE WORD EARTH AND THERE WAS EARTH
TO LIVE UPON THE EARTH THINKING	WOMAN MADE A PRAYER TO SUN INFINITE SOURCE OF ALL BEGINNING	ABUNDANCE PECUND CREATIVITY BRILLIANCE
IN HEAVENLY BODIES IN TIDAL CYCLES	IN SLEEP HUNGER AND HEARTBEATS WAS THE BEGINNING OF EVERYTHING	THE BODIES THE TIDES THE SEASONS CAME
THE WATER WAS PART OF LAND AND THERE	FORE PART OF THE PEOPLE AND IN THIS PLACE WE FLOURISHED FROM BDOTE	WHERE THE RIVERS WERE OUR LIFEWAYS
LONG BEFORE ST ANTHONY OTOKAHE	YA IN THE BEGINNING DE DAKOTA MAKOC THIS WAS A DAKOTA PLACE THE W	ATER WAS WATER THE WATER WAS PURE
BEFORE MISI ZIIBI BEFORE HERNANDO DE SOTO	OTOKAHEYA IN THE BEGINNING DE DAKOTA MAKOC THIS WAS A DAKOTA PLA	CE THE WATER WAS OUR FIRST MEDICINE
BEFORE OTOKAHEYA IN THE BEGINNING	DE DAKOTA MAKOC THIS WAS A DAKOTA PLACE THE WATER WAS PURE THE	WATER WAS WAKAN SACRED MNI PEJUTA
WIYONPEYATA WESTWARD ALONG THE BALLANTYNE RI	VER NAMED PUATSI BY THE CREE DAKOTA RIVER TO BDOTE THE BEGINNING	OF THE MISSISSIPPI OF THE NORTH
BEFORE SCHOOLCRAFT AND VERITAS CAPUT BEFO	RE MISI ZIIBI LONG BEFORE HERNANDO DE SOTO OTOKAHEYA IN THE BEGINNING DE	DAKOTA MAKOC THE WATER WAS PURE
BEFORE MISI ZIIBI LONG BEFORE HERNANDO	DE SOTO OTOKAHEYA IN THE BEGINNING DE DAKOTA MAKOC THIS WAS A DAKOTA	PLACE THE WATER WAS WAKAN SACRED
ALONG THE RIVER NAMED PUATSI BY THE CR	EE DAKOTA RIVER TO BDOTE THE BEGINNING OF THE MISSISSIPPI OF THE NOR	TH AND THE LITTLE MINNESOTA
WATER A SOURCE OF ALL BEGINNINGS	A BEAUTY A BRILLIANT SPARK A BEGINNING AN ABUNDANCE A GAPING GASS	A LOWER WORLD OF PRIMEVAL WATERS
AN ABUNDANCE A GAPING GASS A WORLD OF	DARK PRIMEVAL WATERS A NEW BEGINNING OF DAYS IN A SHAPELESS DARK	EXPANSE ALL IS CALM AND ALL IS SILENT
THE WATER BECAME THE UNIVERSE BECAME	A THOUSAND THINGS IN NATURE BEGINNING FROM SPACE VOID AND NOTHING	NESS BEFORE A SUN A MOON OR STARS
ANIMALS AND PEOPLE HOLD DEEP WISDO	MITENDER IN ALL THINGS A NEW BEGINNING THE FIRST BLAZE OF DAY THE FI	RST WORDS TEST THE NEW WORLD
COSMOS BIRTHED FROM VOID CREATOR MADE A	NEW WORLD AND PEOPLE WERE BEGINNING WATER WAS BEGINNING CHILD	EN WERE BORN WITH WISDOM IN THEIR BONES
DE DAKOTA MAKOC THIS WAS A DAKOTA PLACE	DE DAKOTA MAKOC THIS WAS A DAKOTA PLACE	DE DAKOTA MAKOC THIS WAS A DAKOTA PLACE
THIS IS HOW IT ALL BEGAN IN THE BEGINNING VASTNESS AT THE BEGINNING	OF TIME THE FIRST DAWN OF LIFE IS IN THE SHADOW IN THE MYTH OF EMERGENCE	
OUT OF THE TREES OF THE LAND THAT IS SACRED A PERPETUAL	BEGINNING APPEARED IN CHAOS FROM CLOTH EMBROIDERED FOR A NEWBORN WORLD	
THE TREES AND THE BLADES OF GRASS HOLD STORIES THEY TELL THE FUTURE THE	BEGINNING OF HISTORY AND CULTURE AND THE DESTINIES OF HEAVEN AND EARTH	
A SONG SO WE LISTEN WE LISTEN LISTEN AND THEN ON THE EDGE OF A DREAM	THE SONGS COME CONDENSED FROM THE FOG LIKE DEWDROPS ON CATTAILS	
WHISPERING THROUGH LEAVES HEAVY VOICES DRIFT BEYOND NIGHT TOWARD	THE SILENT DAWN AND SING HEKTA EHANNA DED UNTIPHEUN HE OHINNI UNKIKSUYAPI KTE	
PEOPLE LIVED TIME WAS MEASURED IN HEAVENLY BODIES AND IN THE TIDES	THE SEASONS CAME SLEEP HUNGER HEARTBEATS CAME THIS WAS THE BEGINNING	
OTOKAHEYA IN THE BEGINNING DE DAKOTA MAKOC THIS WAS A DAKOTA PLACE	THE WATER WAS PURE THE WATER WAS WAKAN SACRED MNI PEJUTA TOKAHEYA HECA	
THE TWITTERING OF BIRDS IN THE VASTNESS OF EARTH HOLDS THE HISTORY OF THE WORLD	IN ANCIENT TIMES LIFE WAS MARKED BY THE STRUGGLE BETWEEN GOOD AND EVIL	
THE GODS ARE IN THE DEEP CLEAVAGES OF SHADE IN THE DROP OF DEW	IN THE LAND IN THE FAIREST FLOWER ON THE PLAIN IN THE HAWK OF THE SKY	
DESTINIES OF HEAVEN AND EARTH WERE ESTABLISHED WITH THE GERMINATION OF LIFE	IN DARKNESS OF PALE DAWN AND THEN THE GLIMMERING WORLD BECAME FRUITFUL	
BOULDERS BUMPING AND RUMBLING FALLING AND CASCADING SHOVING AND ROLLING	IN A WILD RUSH FOLLOWING BONS OF WAITING STILLNESS SILENCE AND SLEEP	
MOUNTAINS WERE CALLED FROM THE WATER MOLTEN LAVA SPILLED OUT	IN GREAT FLOWS FROM THE HOT INTERIOR TO BLANKET THE LAND IN WARMTH	
THE EARTH'S BREATH AND WATER OF THE LAKES TELL OF EVENTS AND MEMORIES	IN THE LIFE OF PEOPLE RIPEDED ON THE BRANCHES OF THE OCEAN WATER	





# Discovery Walk Local Approach







# CONNECTING IT ALL IN A 10 MINUTE WALK



## EXISTING ASSETS

Mayo Clinic and Annenberg Plaza



One and Two Discovery Square



Soldiers Field Park



Zumbro River



## PROPOSED ASSETS

A welcoming and accessible gateway



New food truck plaza with outdoor dining



A pedestrian focused street for connecting



New gardens at Soldiers Field and public art by local artists







## DISCOVERY WALK **ART BY EMERGING LOCAL ARTISTS**



***Photosynthesis***  
by Zoe Cinel



Visitor-activated light installation that illuminates the Franklin Heating Station



***Punctuated Asymptote***  
by Sophia Chai



Striking blue light columns with a common top elevation but varying pole heights



***Poems in the Park***  
by Ayub HajiOmar



33 Inspiring poems cut into the bases of the benches





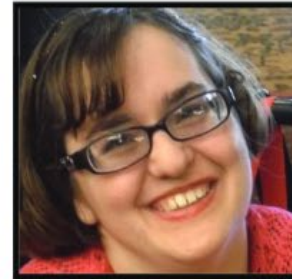
# Local Community Co-Designers

9  
6 slide

- The Community Co-Designers are from diverse backgrounds and are great representatives for their communities.
- They engage with their communities to discuss how design and programming can be inclusive.
- Community Co-Designers are integrated into the team to ensure we achieve:
  - Accessible and welcoming space for all
  - Create unique experiences
  - Create a sense of cultural belonging
  - Create places that encourage health



Wafa Elkhailifa  
Sudanese Community Activist



Krista Jacobson  
connection to communities dealing with  
mobility challenges



Laurie Kumferman  
YMCA



Chao Mwatela  
RCTC Student Advising



Lap Nguyen  
John Marshall High  
School student



Jenny Rho  
Community Health  
Center



Jeremy Westrum  
connection to communities dealing  
with brain injuries

[LINK TO CO-DESIGN VIDEO:](#)





## Co-designers bring community to DMC projects

Work on Discovery Walk and rapid transit designs target new voices to ensure community is heard

Written By: [Randy Petersen](#) | 5:30 am, Mar. 22, 2021



NEXT  
CITY

### Cities Are Looking to Get Better Community Engagement By Paying for It

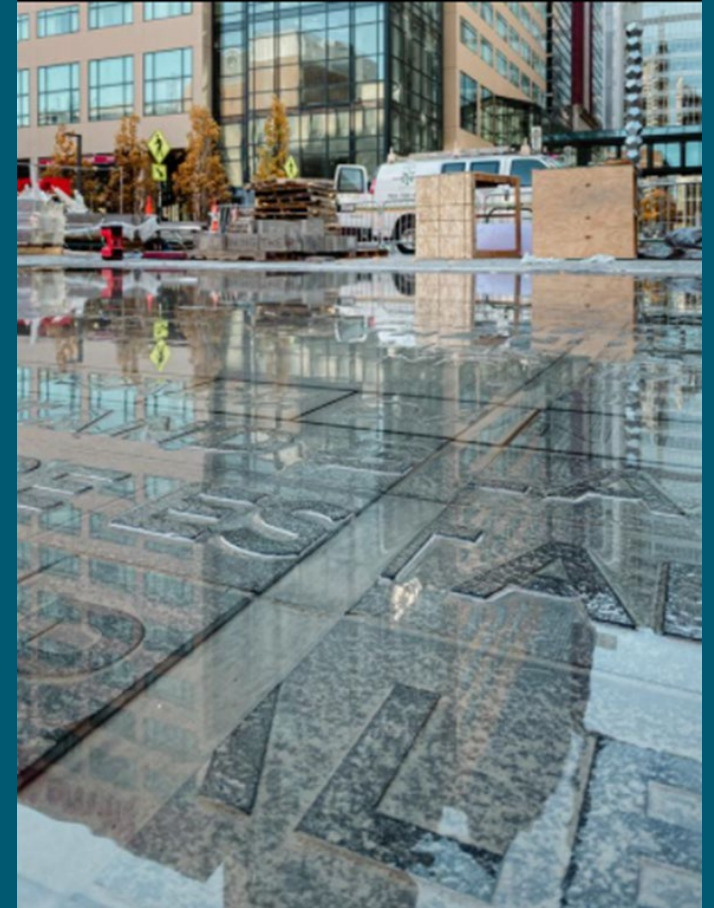
Rochester, MN, is just one of many cities across the country whose agencies are convening paid advisory committees to ensure the community's voices are heard.

HENRY PAN MAY 6, 2021





# Public Art Prototyping and Engagement





# Engagements Prototyping

Peace Plaza (Oct. 2018)



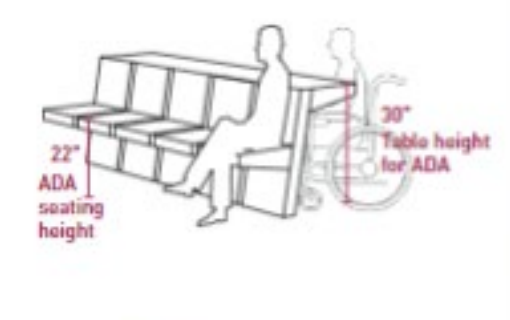
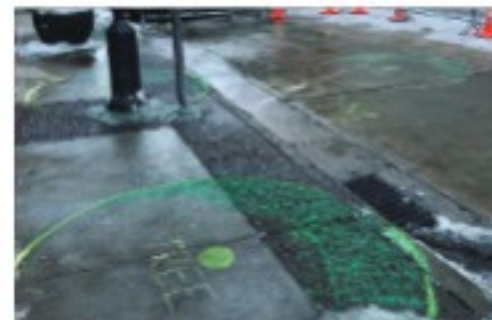
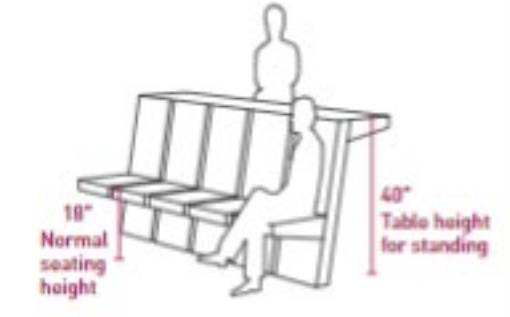
Warming Benches (Feb. 2019)



Streetscape (March 2019)



Universal Design (May 2019)



Why HOC? Engagement Design Recommendation O&M Next Steps





Testing paver height and accessibility of the raised lettered pavers.







Temporary art installation to activate the plaza and construction site to entice people to come out and drive foot traffic for surrounding businesses.





[illegible]





THANK YOU



## Artworks

35 artwork commissions  
Listed in the collection from 1997-2022

## Costs

Commissions range from \$5K- \$200K

## Materials

Materials include concrete, steel,  
aluminum, fiber, mosaic, glass, led's/  
light, and more



TOTAL SPENT BY  
NONPROFIT ARTS AND  
CULTURE ORGANIZATIONS

**\$2 Million**

TOTAL SPENT BY  
ARTS AND CULTURE  
ATTENDEES

**\$1.7 Million**

TOTAL ECONOMIC IMPACT FROM  
**NONPROFIT ORGANIZATIONS AND  
THEIR AUDIENCES IS ALMOST**

**\$3.7 MILLION**

GOVERNMENT REVENUE (TAXES & FEES)  
**GENERATED BY ARTS AND CULTURE NONPROFIT  
ORGANIZATIONS & THEIR AUDIENCES**

**\$397,745**

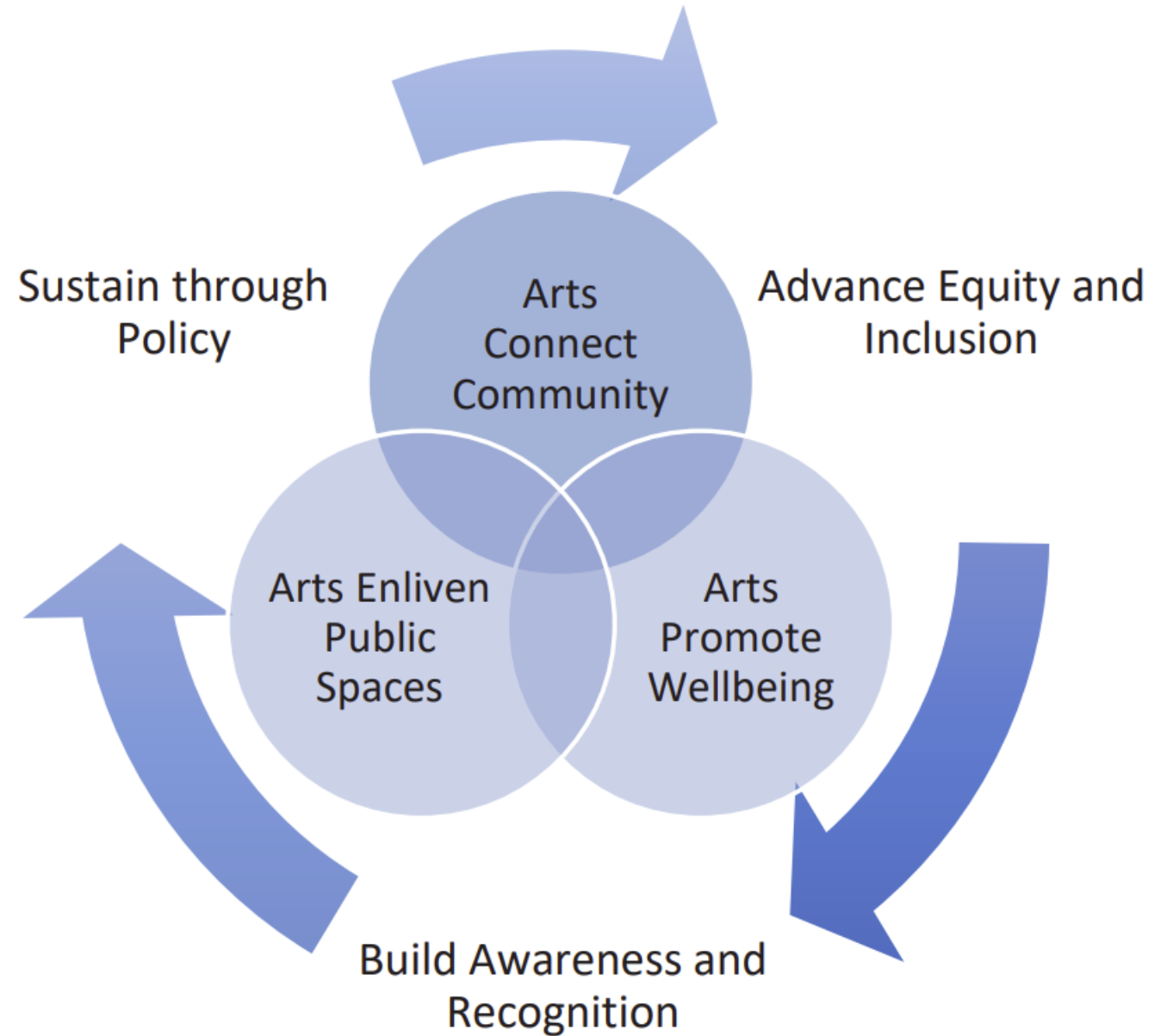


MN Citizens for the Arts Executive Director, Sheila





*The arts make our  
values visible.*







accessibility



funding



process



contracting



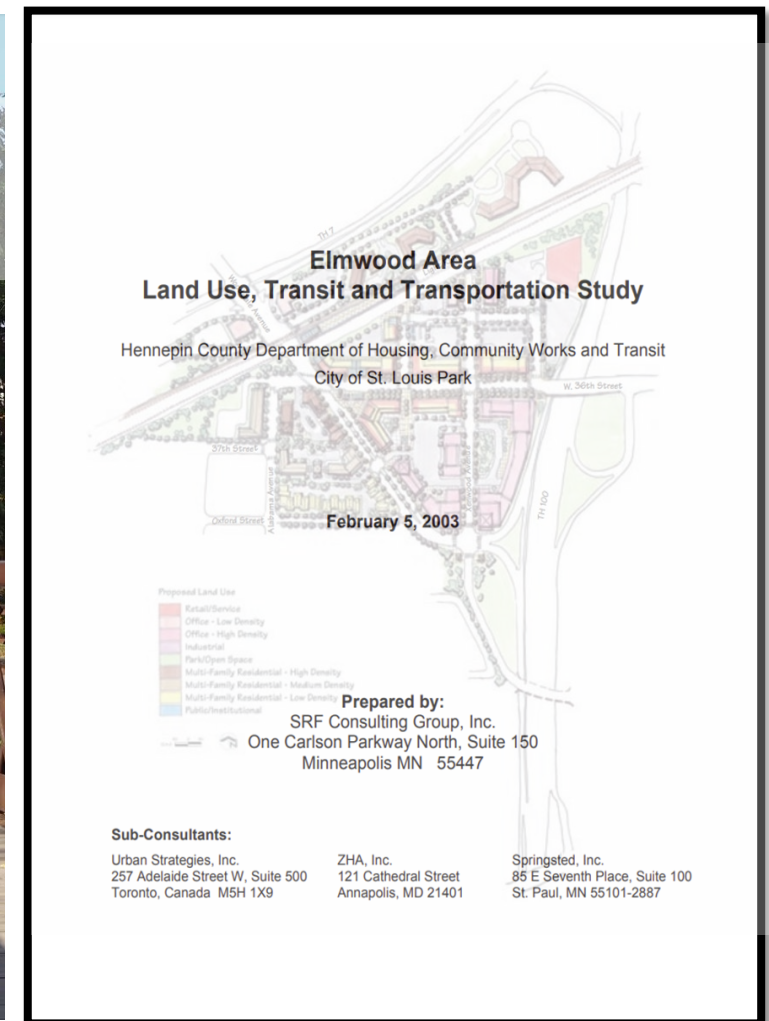
maintenance

public

partnerships

private







## Gateways



## Plazas, pocket parks



## Streetscapes







7

State Hwy 7 Frontage Rd

Camerata Way

Medley Row

35th St W

35th St W

Kinwood Ave S

Webster Ave S

Yosemite Ave S

West 36th Street

36th St W

36th St W

Wooddale Ave

100

Park Center Blvd

Oxford St

Center Park

Wooddale Ave

Brunswick Ave S





01

Luggage



SCULPTURE



SIGNAGE



BOLLARDS



BENCHES & LITTER



PAVEMENT



LIGHTING



STRCUTURE



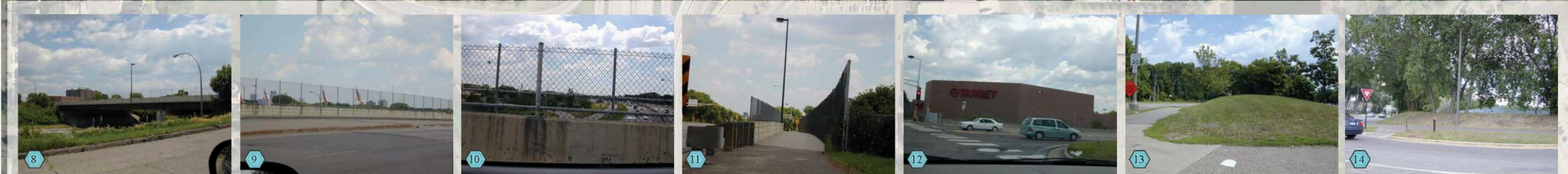
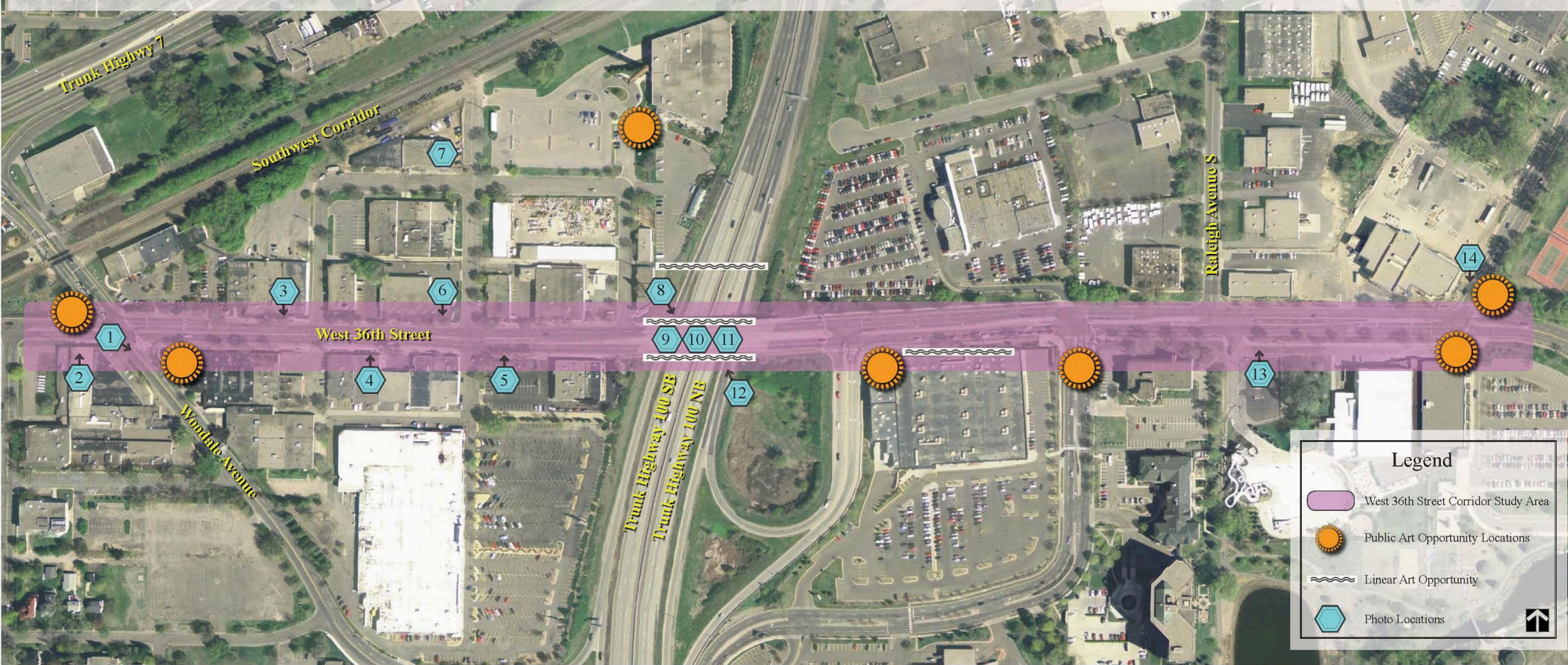
RAILINGS & WALLS



WATER FEATURES





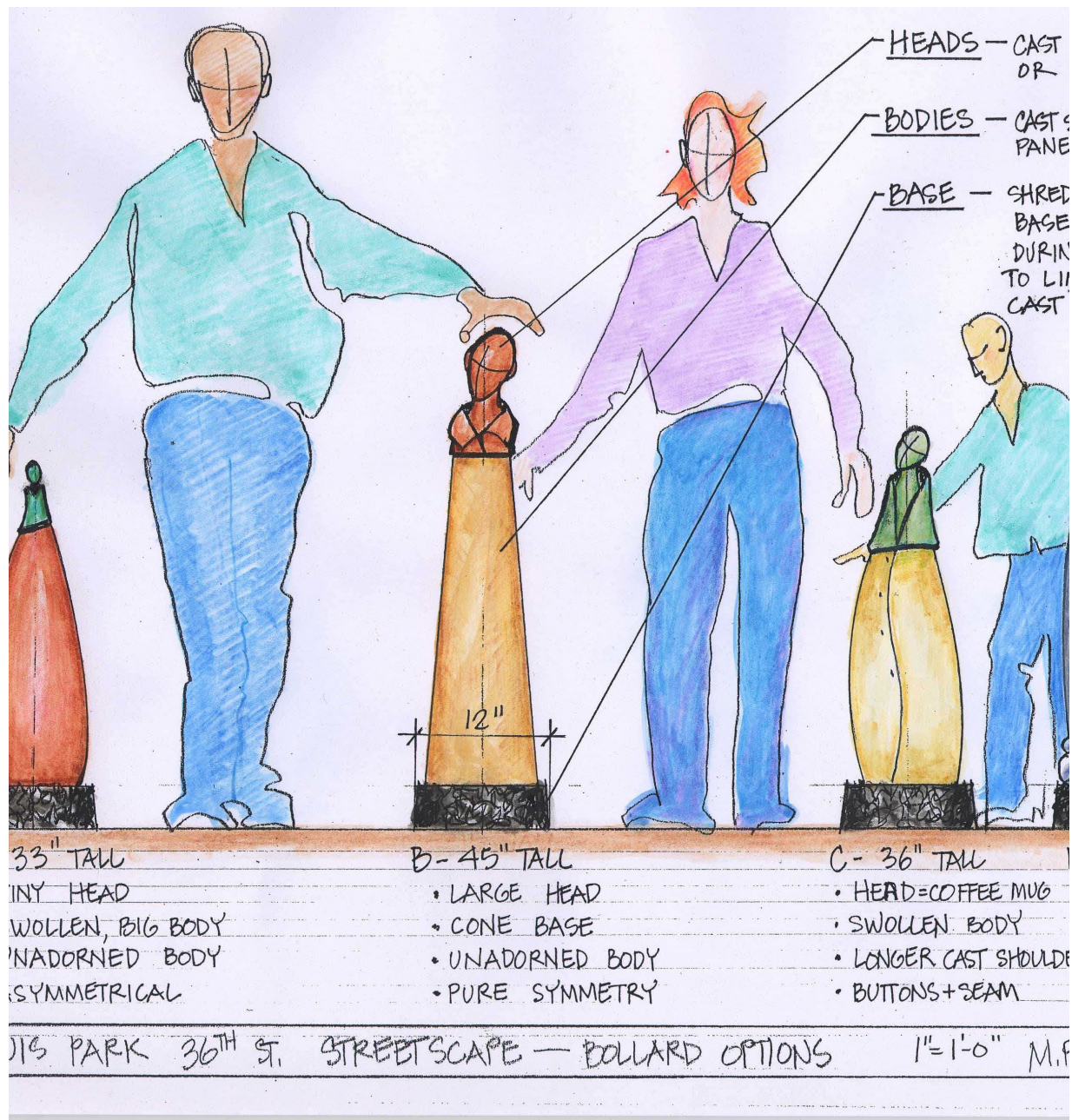






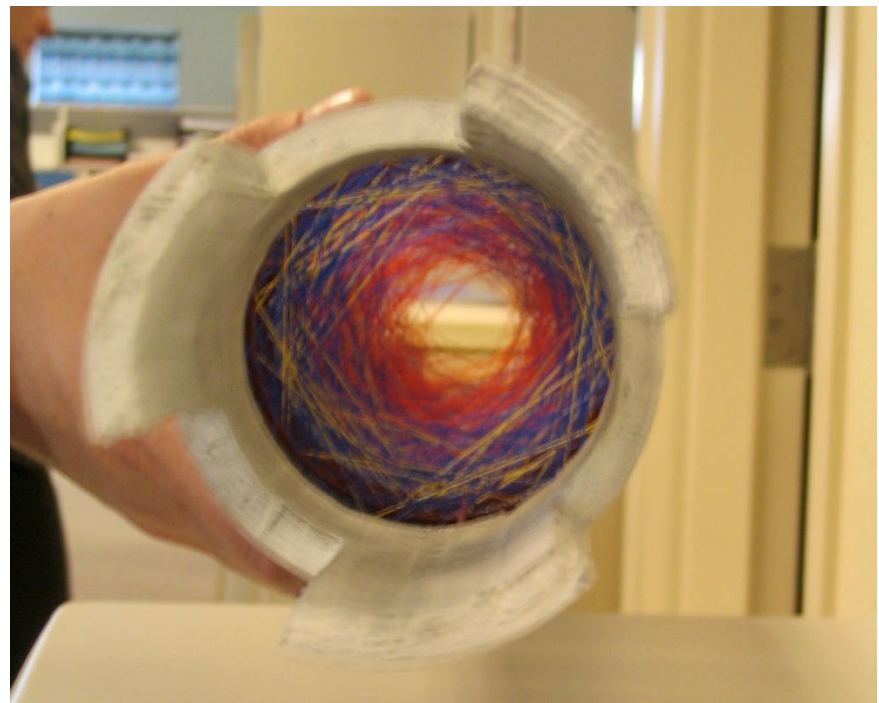
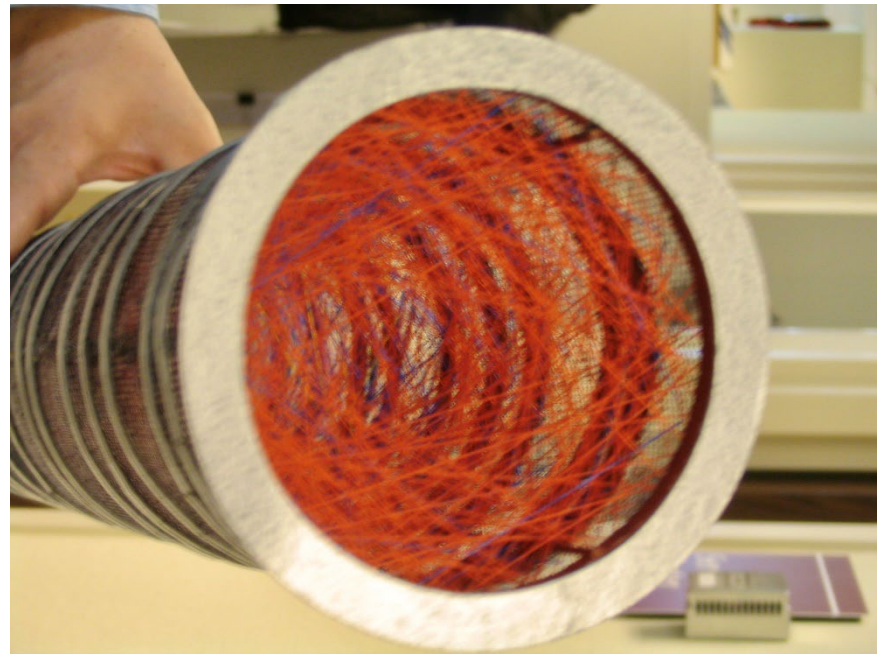
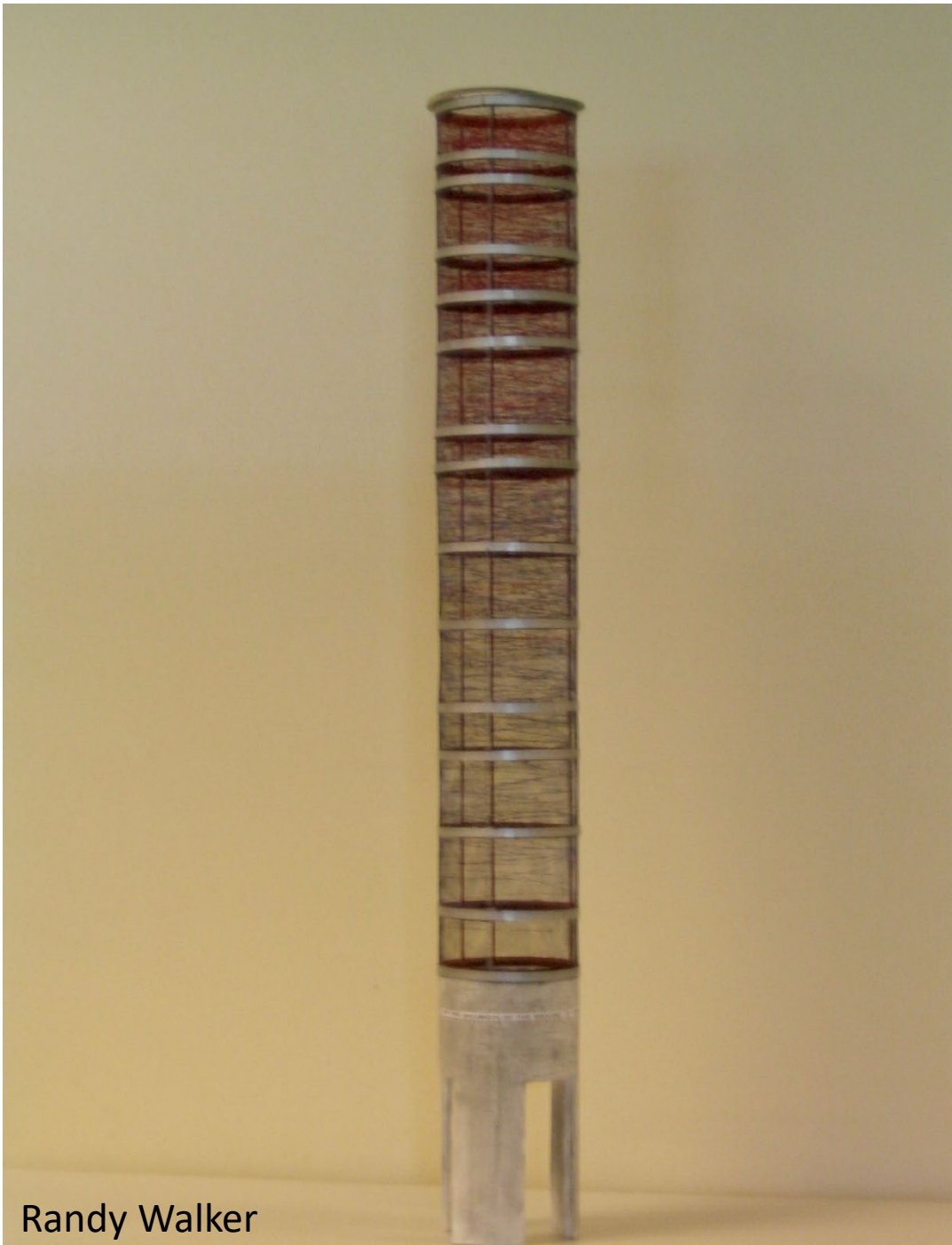
The Great Blue Heron – Jeffrey Kalstrom and Diane Hellecksom







Randy Walker





## Rhythm of Life by Denise Tennen



Photo by Ken Fox

Source: Public Art Review Issue 37 – 2007 (fall/winter) Published September 1, 2007

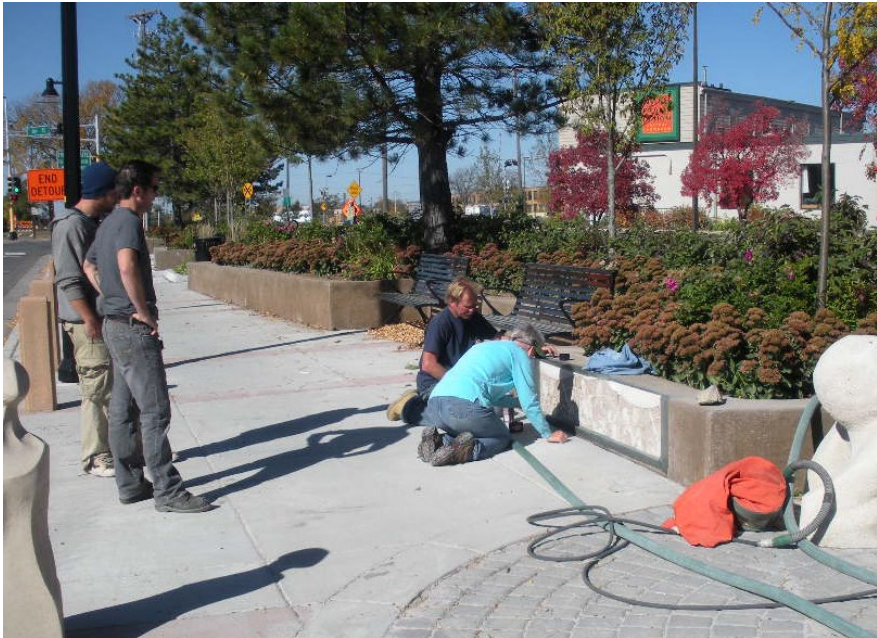
















































TOWERLIGHT  
on Wooddale Avenue

Leasing Now  
for Fall 2012

Inspired Senior Living

952.378.0681

Under Construction



