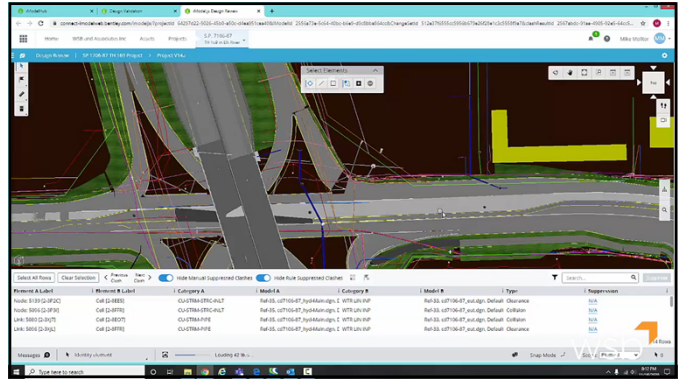
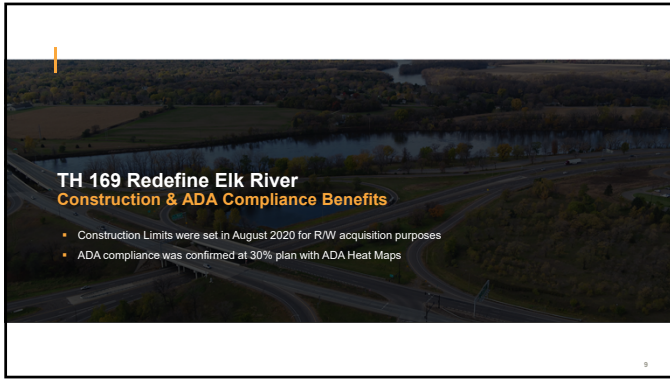


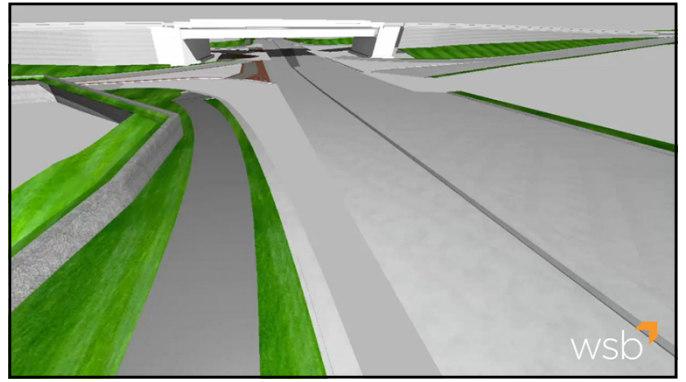
7



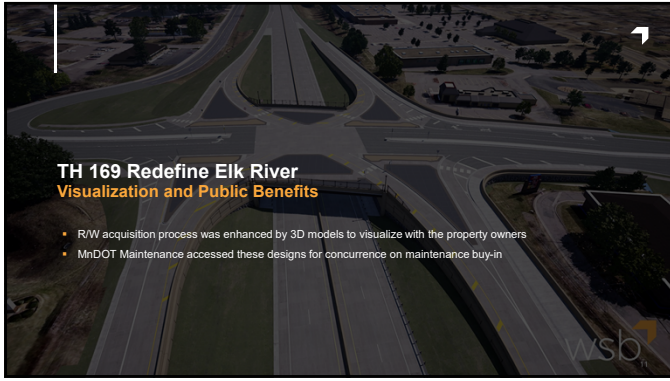
8



9



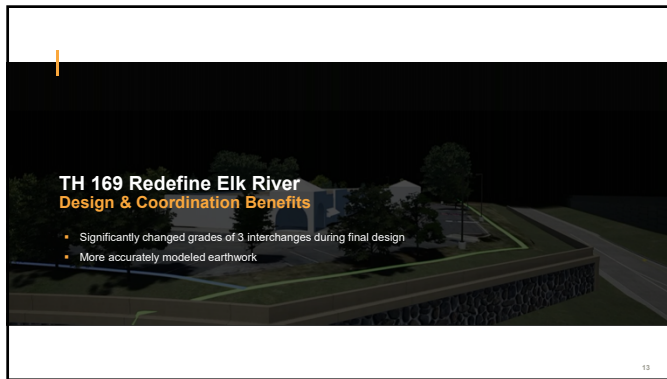
10



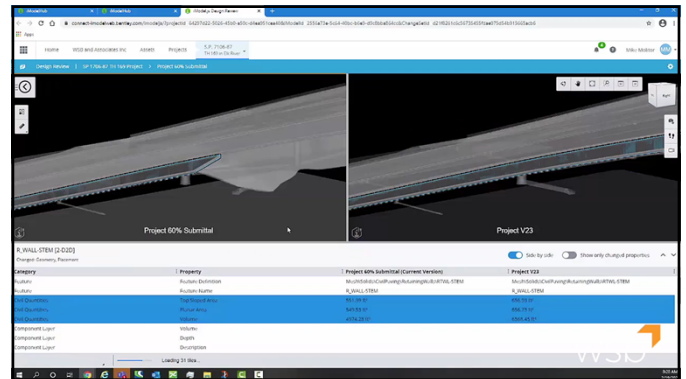
11



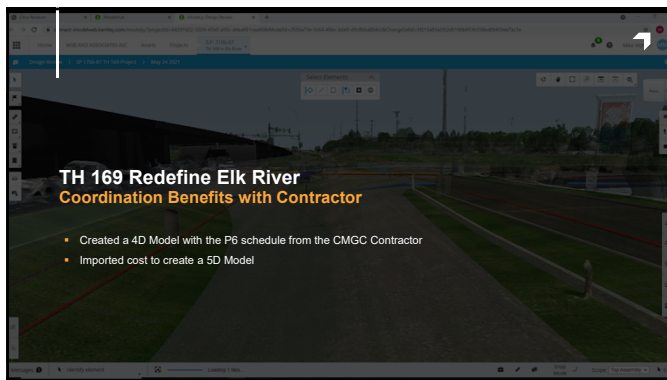
12



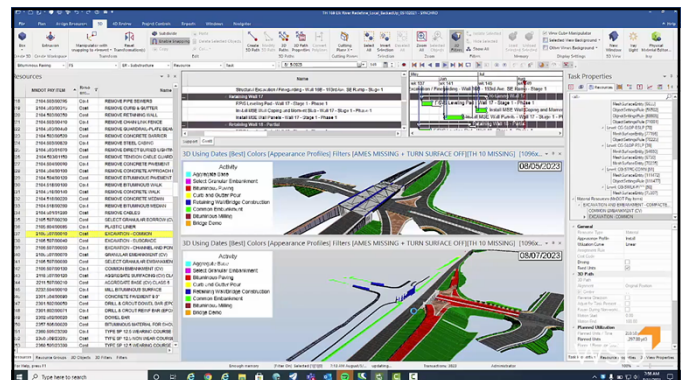
13



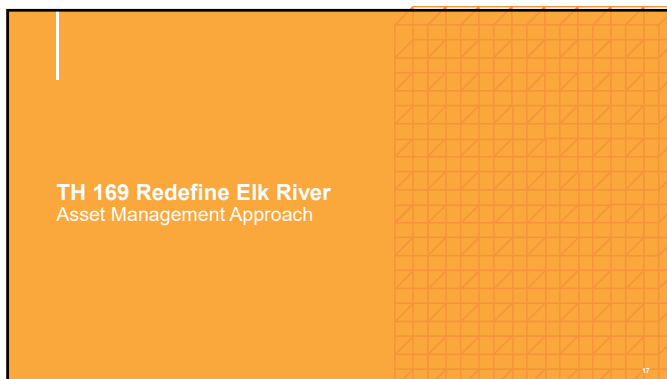
14



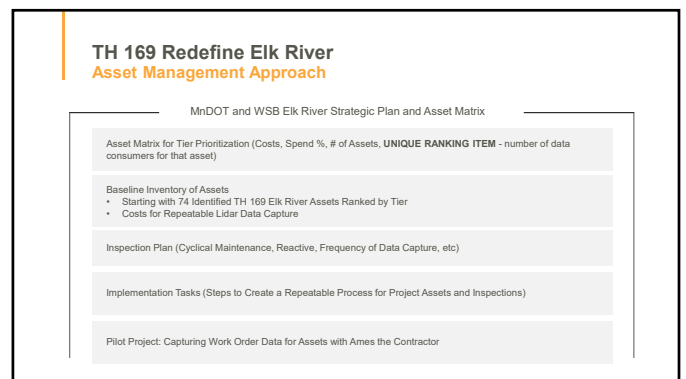
15



16



17



18

TH 169 Redefine Elk River
Asset Management Approach

- MnDOT and WSB Asset Management Plan on Elk Assists Vendors Like Trimble In Identifying Data Being Captured Today by Contractors and Their Technology
- This Creates Asset Data Integration Opportunities with the DOT and AASHTO

Composite Asset Key (Desc., Contact)		Tier and AM Maint. Approach		TAMP		Asset Value		No. of Assets		TAMP	
As set ID	Asset Class	Tier	Desired Asset Mgmt Approach	AM Maturity Step Gap	19	(High >\$1B, Med \$1B-50.5B, Low <\$500M)	(High > 3000, Med >500, Low)	App			
3	All	All	All	All							
4	10 Bike and Ped	2	Condition	4	No	LOW	LOW				
5	12 Bike and Ped	2	Condition	4	No	MED	HIGH	Rem			
6	11 Bike and Ped	2	Condition	4	Yes	MED	HIGH				
7	16 Bike and Ped	3	Cycle	2	No	MED	HIGH				
8	1 Bridges	3	Condition	0	Yes	HIGH	HIGH	MED			
9	9 Bridges	2	Condition	0	No	MED	LOW	Federa			
10	75 Bridges	5	None	0	<null>	<null>	<null>				
11	4 Facilities	1	Condition+	0	Yes	LOW	LOW				

19

TH 169 Redefine Elk River
Bridge No. 71018 at TH 169 and
197th Street – Mixed Reality

20

3D Bridge Modeling - Open Bridge Designer
TH169 Redefine/Elk River - 3D BIM Modeling

21

22

23